

KOHLER Command PRO V-Twins Heavy-duty Air Cleaner

Engine Type	Four-cycle, V-twin cylinder, air-cooled, vertical or horizontal shaft, gasoline, full-pressure lubrication with oil filter, aluminum head and crankcase with cast-iron cylinder liners, two-barrel carburetor						
Model	CH/CV620	CH/CV640	CH/CV682	CH/CV732	CH/CV742	CH/CV752	
Power @ 3600 rpm HP (kw)	19 (14.2)	20.5 (15.3)	22.5 (16.8)	23.5 (17.5)	25 (18.6)	27 (20.1)	
Displacement cu in (cc)	41.1 (674)		42.4 (694)	45.6 (747)			
Bore in (mm)	3.1 (80)			3.3 (83)			
Stroke in (mm)	2.6 (67)		2.7 (69)				
Peak Torque @ Maximum	CH lbs ft (Nm)	35.0 (47.5) @ 2400 rpm	35.7 (48.4) @ 2400 rpm	38.9 (52.7) @ 3000 rpm	40.4 (54.8) @ 2600 rpm	41.2 (55.9) @ 2600 rpm	42.2 (57.2) @ 3000 rpm
Peak Torque @ Maximum	CV lbs ft (Nm)	34.0 (46.1) @ 2400 rpm	34.7 (47.0) @ 2400 rpm	39.0 (52.9) @ 2800 rpm	40.3 (54.6) @ 2800 rpm	40.8 (55.3) @ 3000 rpm	41.2 (55.9) @ 3000 rpm
Compression Ratio	8.5 : 1		8.7 : 1	9.1 : 1			
Dry Weight lb (kg)	90 (41)		105 (48)				
Oil Capacity US qt (L)	2.0 (1.9)						
Lubrication	Full-pressure with full-flow filter						
Dimensions LxWxH in (mm)							
CH - heavy-duty air cleaner	CH620 - 640: 14 (355) x 17.7 (451) x 26.5 (672)		CH682-752: 14.6 (371) x 17.7 (451) x 24.5 (622)				
CV - heavy-duty air cleaner	CV620 - 640: 20.5 (521) x 17.7 (451) x 22.5 (572)		CV682 - 752: 20.5 (521) x 16.2 (413) x 19.9 (506)				

*Horsepower ratings meet Society of Automotive Engineers Small Engine Test Code J1940. Actual engine horsepower is lower and affected by, but not limited to, accessories (air cleaner, exhaust, charging, cooling, fuel pump, etc.), application, engine speed and ambient operating conditions (temperature, humidity and altitude). For more information, contact Kohler Co. Engine Engineering. Kohler reserves the right to change product specifications, designs and equipment without notice and without incurring obligation.
**L = grass screen to PTO mounting face W = spark plug to spark plug H = top of air cleaner cover to mounting feet
***L = blower housing to air cleaner cover W = spark plug to spark plug H = top of air cleaner cover to mounting surface

Standard Features

- Accelerator pump (CH730-740, CV18-740)
- Two-barrel carburetor (CH/CV750)
- Electronic fuel injection (CH/CV26, 745)
- 20-amp charging, regulated
- High-performance spark plugs*
- Top-mount controls (CV18-750)
- High-efficiency fan and screen*
- Yellow oil cap and dipstick*
- Commercial mower package (CV18-750)
- Large filters (air, oil, fuel)*
- Hardened crank journals
- PTO side-load sleeve bearing (CH/CV730-740)
- Hydraulic valve lifters
- Mechanical fuel pump (CH)
- Pulse fuel pump (CV)
- Smart-Choke™ carburetor
- 12-volt solenoid shift electric start
- Dual-element air cleaner
- Dual oil drains
- Electronic ignition
- Solenoid fuel shutdown
- Oil Sentry™ automatic warning/shutdown system (installed, not wired)
- Full-pressure lubrication/full-flow filter

*Required features for Command PRO engines

3-Year Limited Warranty

Popular Factory Options

- Remote oil filter
- Rotatable oil filter base
- Muffler guard
- Variety of mufflers
- Exhaust deflector/spark arrestor
- Engine-mounted controls (CH)
- 5 percent governor
- Electronic governor
- SAE A/B pump mounts
- Choice of air cleaners (flat, HD, WAWB)
- 15- and 25-amp charging systems
- Heavy-duty air cleaner (CH/CV740)
- Guard for rotating grass screen
- Chopper-type grass screen
- Additional crank sizes
- Pulse fuel pump (CH)
- Flywheel PTOs
- LP and dual-fuel carburetor (CH20/730)
- PTO thrust bearing (CH730-750)
- Oil cooler (CV18-750)

Get more at KohlerEngines.com



KOHLER
COMMAND PRO® 19-27 HP

KOHLER Engines

For more information, contact your KOHLER source of supply.
Or call toll-free in the U.S. and Canada 800-544-2444.

Kohler Co., Kohler, Wisconsin 53044 Tel 920-457-4441 Fax 920-459-1570

KohlerEngines.com

© 2013 by Kohler Co. All rights reserved.
KOHLER Command PRO®, Quad-Clean™ and Oil Sentry™ are trademarks of Kohler Co.

KOHLER Engines

Printed in U.S.A. E-2196 03/13

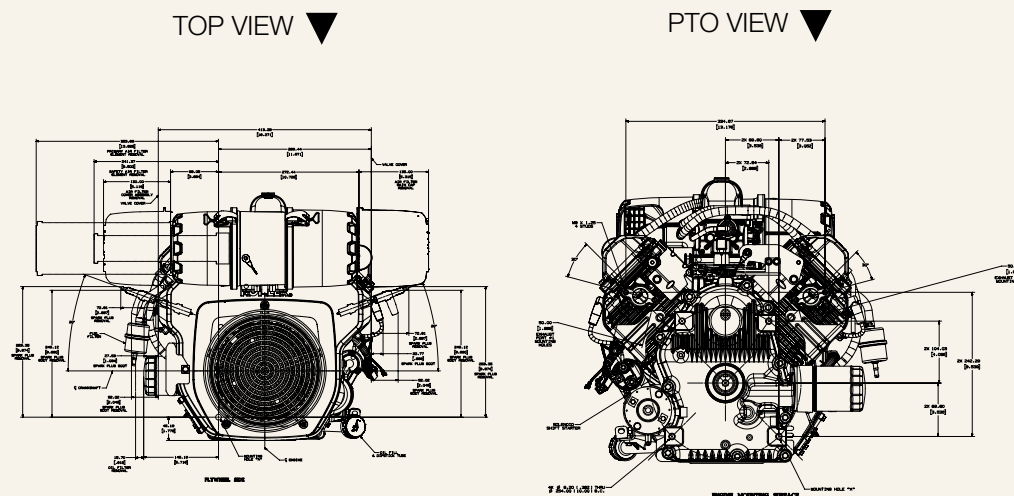
THE ENGINE THAT'S AS TOUGH AS YOUR CREW.



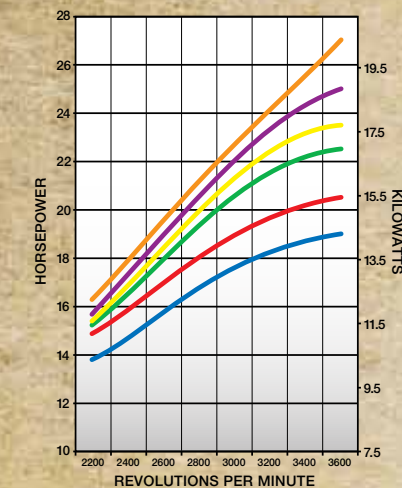
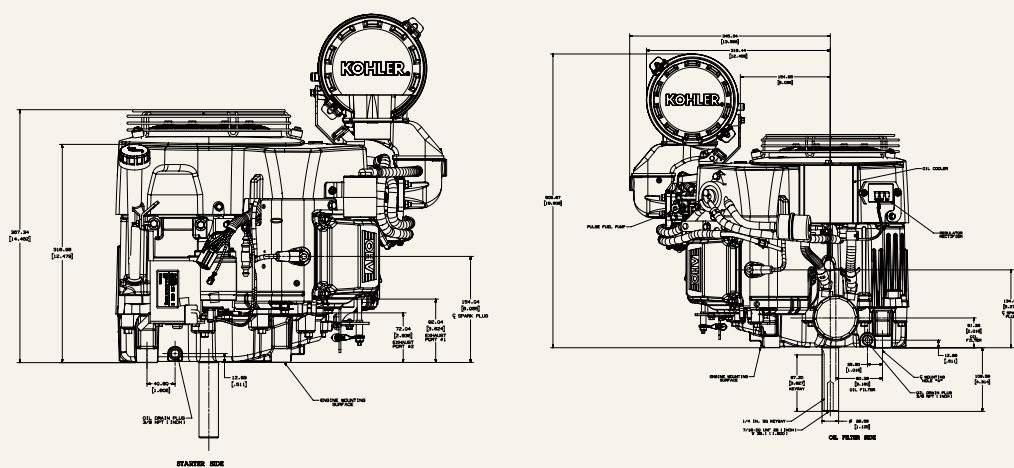
Whatever the job or the power range, KOHLER® Command PRO® V-Twin engines set the standard for power. Guided by our exclusive Performance Engineering, the Command PRO V-Twin has a trusted heritage of powering commercial-duty applications.

Command PRO engines are designed to make your job easier. And built to last, so you can work more and pay less. That's why professionals have relied on the Command PRO V-Twin to power the equipment they use to earn their living for over 20 years.

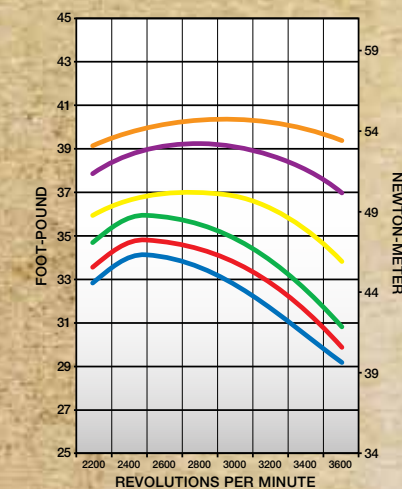
19-27 HP VERTICAL-SHAFT ENGINES HEAVY-DUTY AIR CLEANER



STARTER SIDE VIEW ▼ OIL FILTER SIDE VIEW ▼



Maximum Power



Maximum Torque

RATED AT 3600 RPM
PER SAE J1940 GROSS

KOHLER Command PRO® V-Twins Flat Air Cleaner

Engine Type	Four-cycle, V-twin cylinder, air-cooled, vertical or horizontal shaft, gasoline, full-pressure lubrication with oil filter, aluminum head and crankcase with cast-iron cylinder liners, flat air cleaner					
Model	CH/CV620	CH/CV640	CH/CV680	CH/CV730	CH/CV740	CH/CV750
Power @ 3600 rpm HP (kw)	19 (14.2)	20.5 (15.3)	22.5 (16.8)	23.5 (17.5)	25 (18.6)	27 (20.1)
Displacement cu in (cc)	41.1 (674)			44.2 (725)		45.6 (747)
Bore in (mm)	3.1 (80)			3.3 (83)		
Stroke in (mm)	2.6 (67)					
Peak Torque @ Maximum	CH 35.0 (47.5) @ 2400 rpm	35.7 (48.4) @ 2400 rpm	36.8 (49.9) @ 2400 rpm	38.4 (52.1) @ 2800 rpm	39.2 (53.1) @ 3000 rpm	41.2 (55.9) @ 3200 rpm
Peak Torque @ Maximum	CV 34.0 (46.1) @ 2400 rpm	34.7 (47.0) @ 2400 rpm	35.8 (48.5) @ 2400 rpm	36.9 (50.0) @ 2800 rpm	39.2 (53.1) @ 2800 rpm	40.3 (54.6) @ 3000 rpm
Compression Ratio	8.5 : 1			9.0 : 1		9.4 : 1
Dry Weight lb (kg)	90 (41)			94 (43)		105 (48)
Oil Capacity US qt (L)	2.0 (1.9)					
Lubrication	Full-pressure with full-flow filter					
Dimensions LxWxH in (mm)						
CH - flat air cleaner	CH620 - 740: 14 (355) x 17.7 (451) x 19 (483)			CH750: 14 (355) x 17.7 (451) x 22.4 (568)		
CV - flat air cleaner	17.8 (452) x 17.7 (451) x 14.1 (358)					

*Horsepower ratings meet Society of Automotive Engineers Small Engine Test Code J1940. Actual engine horsepower is lower and affected by, but not limited to, accessories (air cleaner, exhaust, charging, cooling, fuel pump, etc.), application, engine speed and ambient operating conditions (temperature, humidity and altitude). For more information, contact Kohler Co. Engine Engineering. Kohler reserves the right to change product specifications, designs and equipment without notice and without incurring obligation.
**L = grass screen to PTO mounting face. W = spark plug to spark plug. H = top of air cleaner cover to mounting feet
***L = blower housing to air cleaner cover. W = spark plug to spark plug. H = top of air cleaner cover to mounting surface

Standard Features

- Accelerator pump (CH730-740, CV18-740)
- Two-barrel carburetor (CH/CV750)
- Electronic fuel injection (CH/CV26, 745)
- 20-amp charging, regulated
- High-performance spark plugs*
- Top-mount controls (CV18-750)
- High-efficiency fan and screen*
- Yellow oil cap and dipstick*
- Commercial mower package (CV18-750)
- Large filters (air, oil, fuel)*
- Hardened crank journals
- PTO side-load sleeve bearing (CH/CV730-740)
- Hydraulic valve lifters
- Mechanical fuel pump (CH)
- Pulse fuel pump (CV)
- Smart-Choke™ carburetor
- 12-volt solenoid shift electric start
- Dual-element air cleaner
- Dual oil drains
- Electronic ignition
- Solenoid fuel shutdown
- Oil Sentry™ automatic warning/shutdown system (installed, not wired)
- Full-pressure lubrication/full-flow filter

*Required features for Command PRO engines

3-Year Limited Warranty

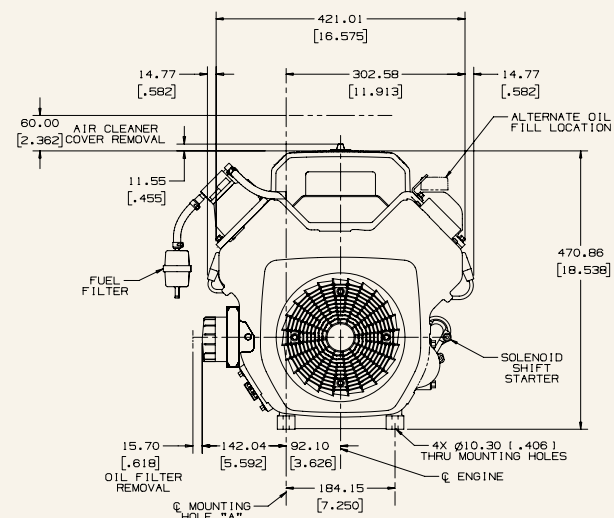
Popular Factory Options

- Remote oil filter
- Rotatable oil filter base
- Muffler guard
- Variety of mufflers
- Exhaust deflector/spark arrestor
- Engine-mounted controls (CH)
- 5 percent governor
- Electronic governor
- SAE A/B pump mounts
- Choice of air cleaners (flat, HD, WAWB)
- 15- and 25-amp charging systems
- Heavy-duty air cleaner (CH/CV740)
- Guard for rotating grass screen
- Chopper-type grass screen
- Additional crank sizes
- Pulse fuel pump (CH)
- Flywheel PTOs
- LP and dual-fuel carburetor (CH20/730)
- PTO thrust bearing (CH730-750)
- Oil cooler (CV18-750)

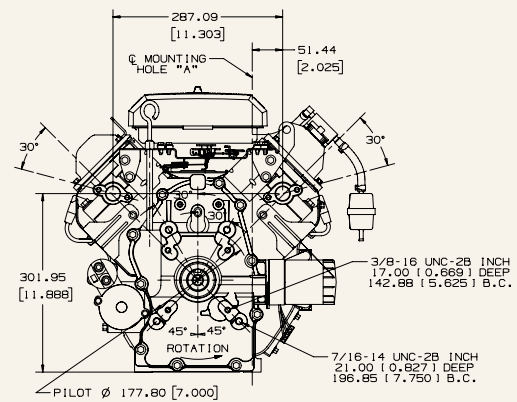
KOHLER® COMMAND PRO® 19-27 HP ENGINE ARCHITECTURE

19-27 HP VERTICAL-SHAFT ENGINES FLAT AIR CLEANER

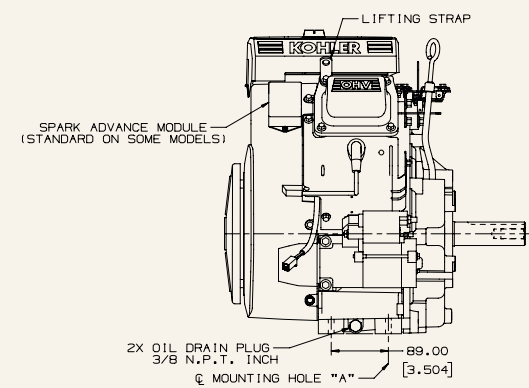
TOP VIEW ▼



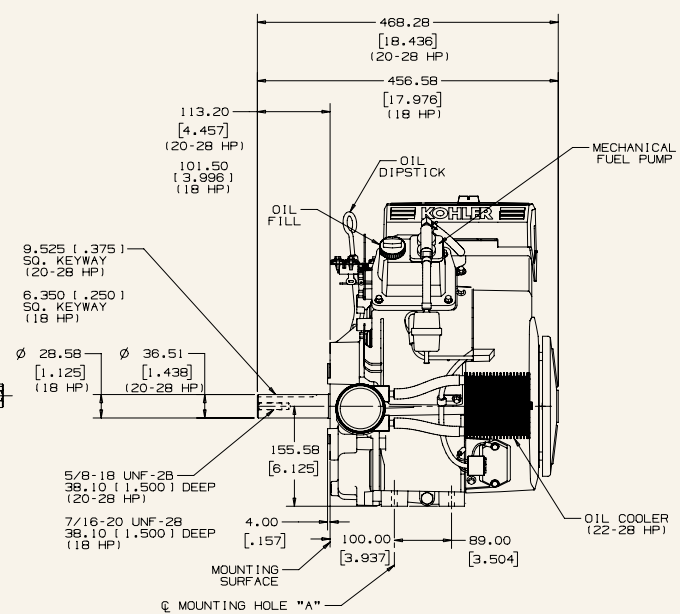
PTO VIEW ▼



STARTER SIDE VIEW ▼



OIL FILTER SIDE VIEW ▼



KOHLER COMMAND PRO® V-TWINS

⊕ ADVANCED PERFORMANCE AND DESIGN

- Starts effortlessly in all weather conditions, from 0 to 110 degrees.
- Automotive-grade head gasket improves durability, reliability and cooling.
- New cylinder bore casting/ring pack technology dramatically improves oil life.
- Standard 10% governor delivers power faster. Optional electronic and 5% governors provide precise engine performance for critical operations.
- Heavy-duty grass screen chops debris to keep the engine clean.
- Hydraulic lifters mean zero maintenance on the valve train.

⊕ BETTER SERVICE AND SUPPORT

- Kohler's Application Engineering Team specs the right engine for your commercial applications.
- Our trusted worldwide network of more than 13,000 dealers stocks parts to minimize downtime.

⊕ EASY TO MAINTAIN

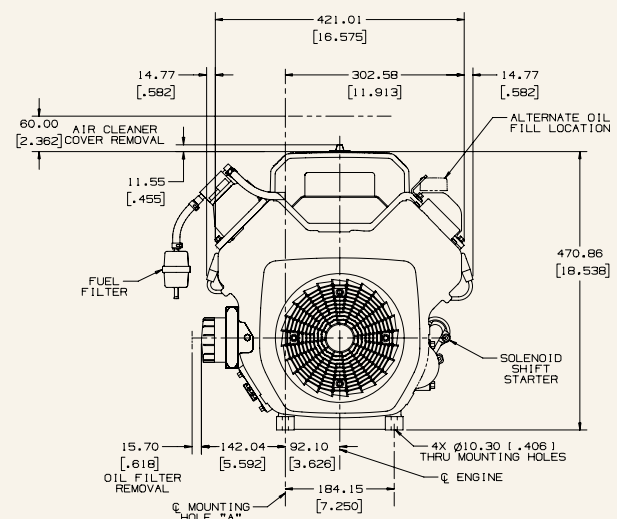
- We're constantly reinventing our engines to exceed your expectations. Some call it going the extra mile. We call it Performance Engineering. Because when you speak, we listen.



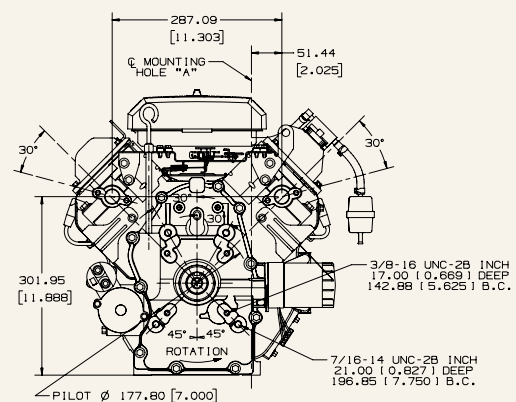
KOHLER® COMMAND PRO® 19-27 HP ENGINE ARCHITECTURE

19-27 HP HORIZONTAL-SHAFT ENGINES FLAT AIR CLEANER

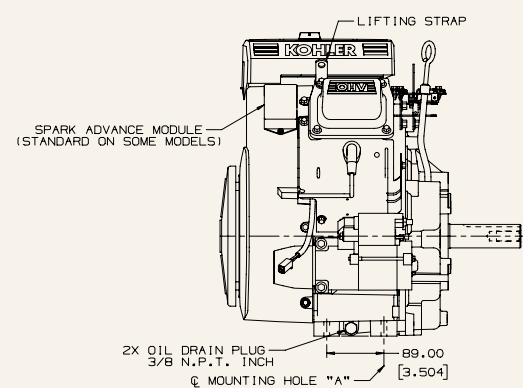
FRONT VIEW ▼



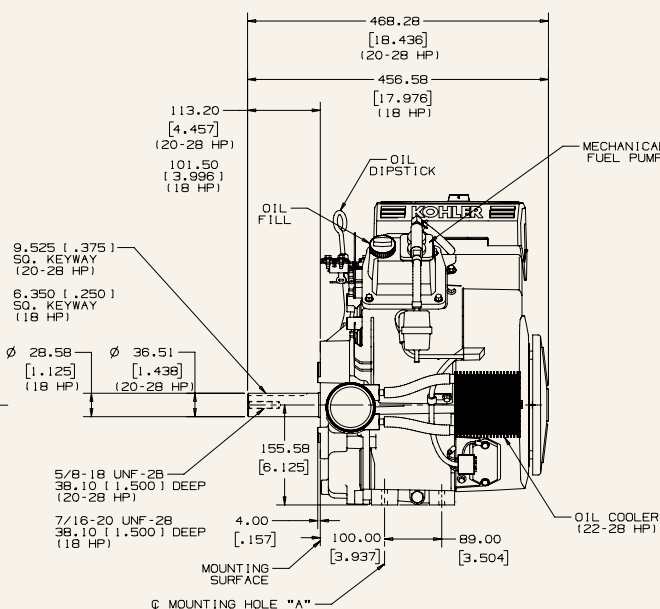
PTO VIEW ▼



STARTER SIDE VIEW ▼

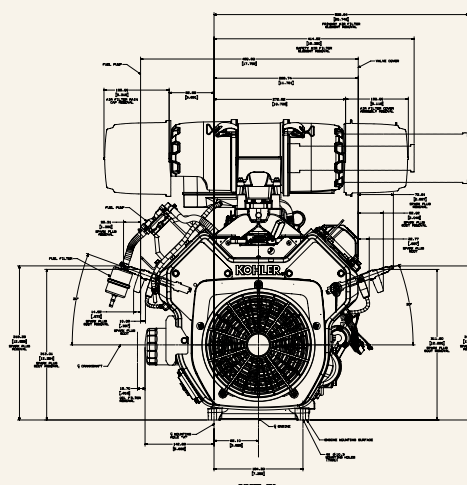


OIL FILTER SIDE VIEW ▼

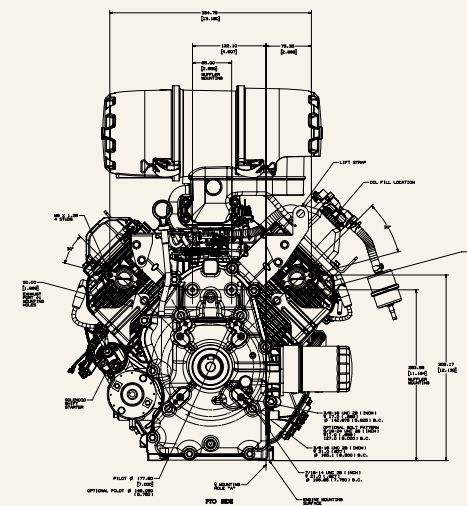


19-27 HP HORIZONTAL-SHAFT ENGINES HEAVY-DUTY AIR CLEANER

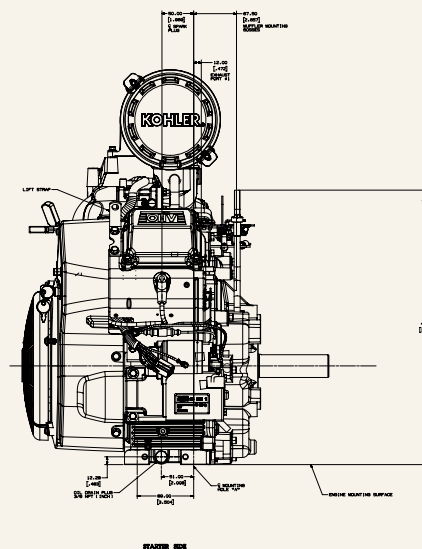
FRONT VIEW ▼



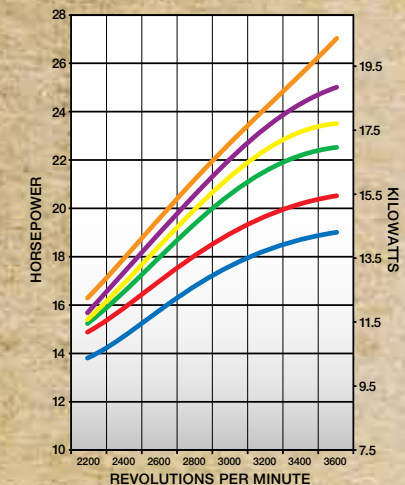
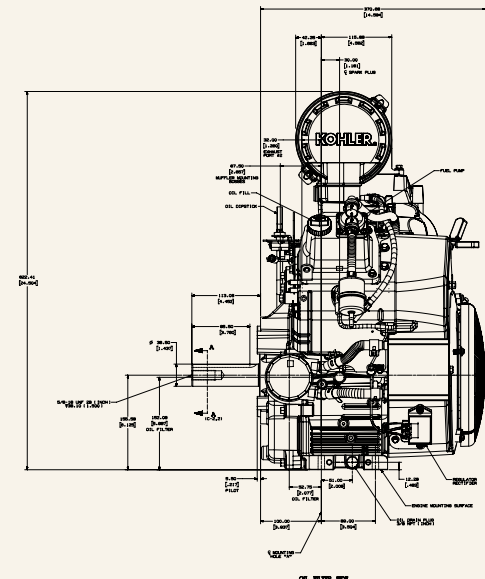
PTO VIEW ▼



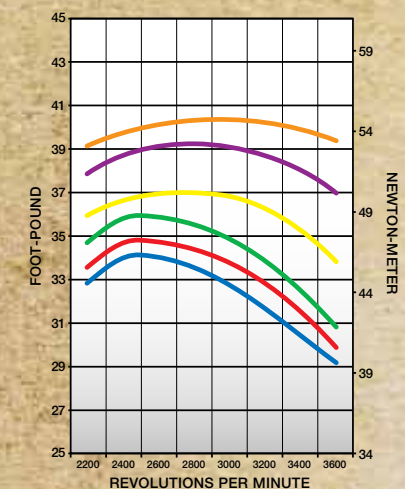
STARTER SIDE VIEW ▼



OIL FILTER SIDE VIEW ▼



Maximum Power



Maximum Torque

RATED AT 3600 RPM
PER SAE J1940 GROSS