

32.5 — 35 — 37



**KOHLER**  
COMMAND PRO® 32.5-37 HP

**KOHLER**.Engines

**THE MUSCLE  
YOU NEED  
FOR COMMERCIAL  
APPLICATIONS.**

Whatever the job or power range, the KOHLER® Command PRO® 999-cc Engine – three OHV models from 32.5 to 37 hp – takes the gas engine to powerful heights of horsepower, torque and reliability.



## KOHLER Command PRO.

### ⦿ PROVEN DURABILITY AND RELIABILITY

- Heavy-duty sleeve bearings provide extra protection for commercial loads.
- Fully integrated oil cooler extends engine and oil life.

### ⦿ EXCEPTIONAL PERFORMANCE

- Robust torque output handles the toughest commercial applications.
- Advanced governor response delivers power without slowing the engine

### ⦿ EASY TO MAINTAIN

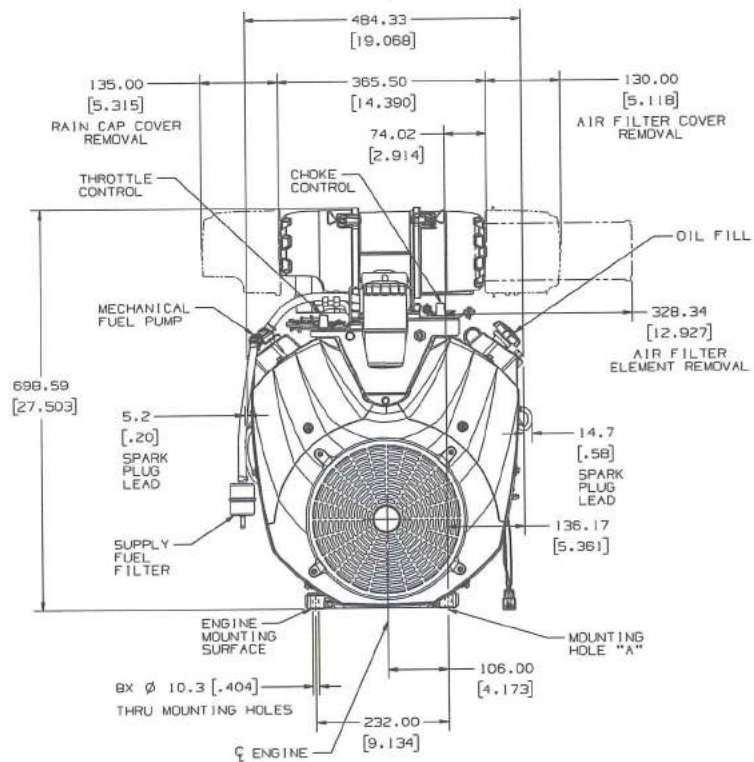
- Large access panels provide easy access for engine cleaning.
- Optional heavy-duty grass screen chops debris to keep the engine clean.
- Top-mounted oil filter makes oil changes simple.
- Hydraulic lifters mean zero maintenance on the valve train.
- Easy routine maintenance and service means more time on the job, less time in the shop.



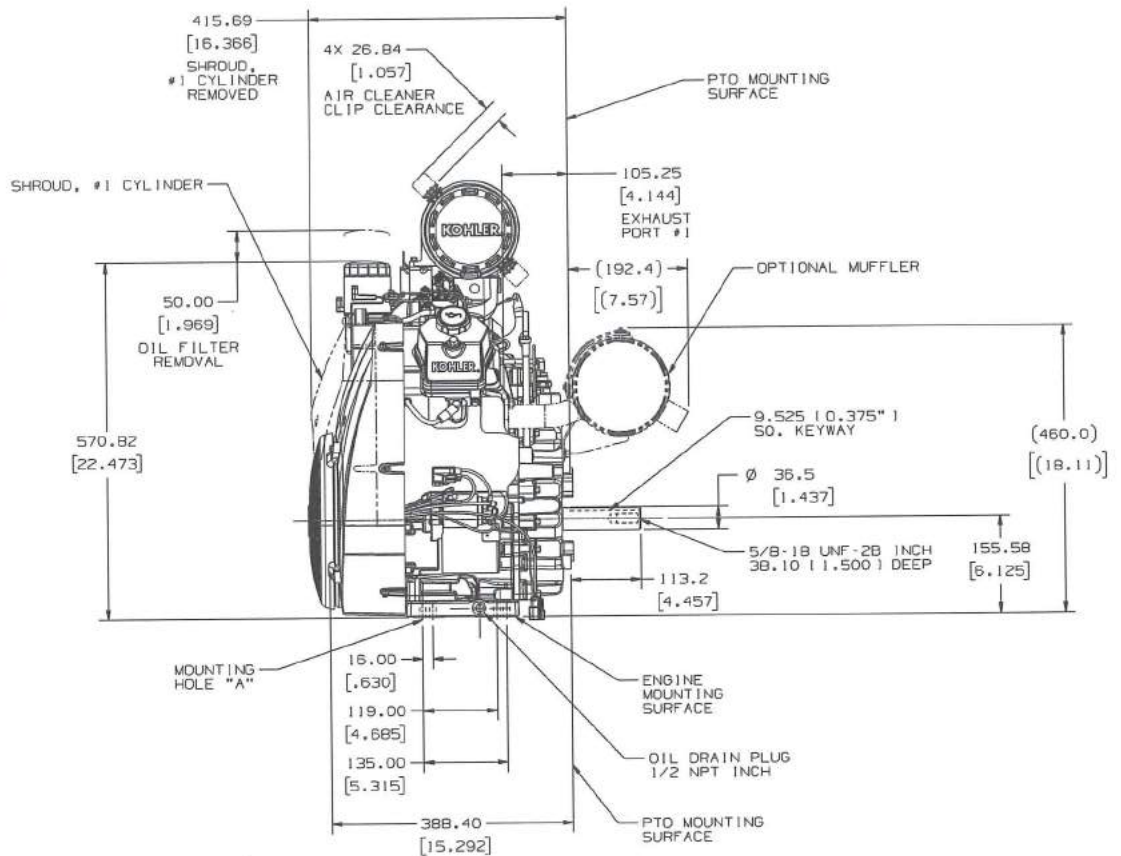
# KOHLER® COMMAND PRO® 32.5-37 HP ENGINE ARCHITECTURE

FRONT VIEW

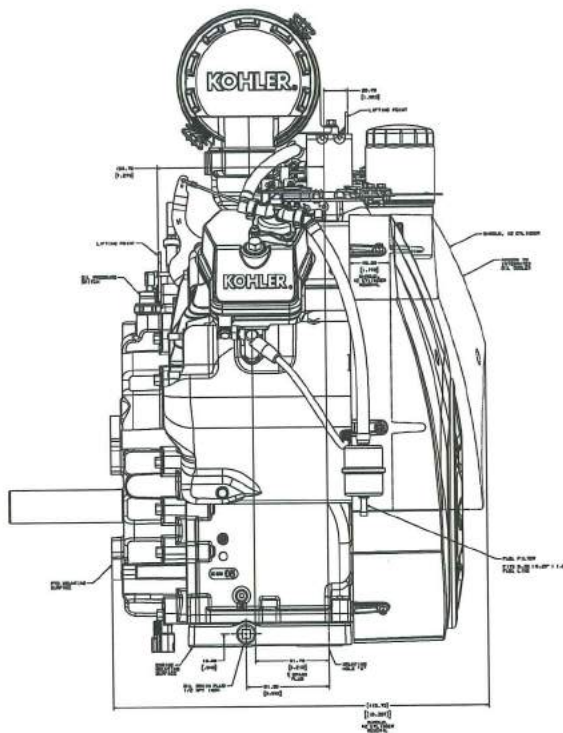
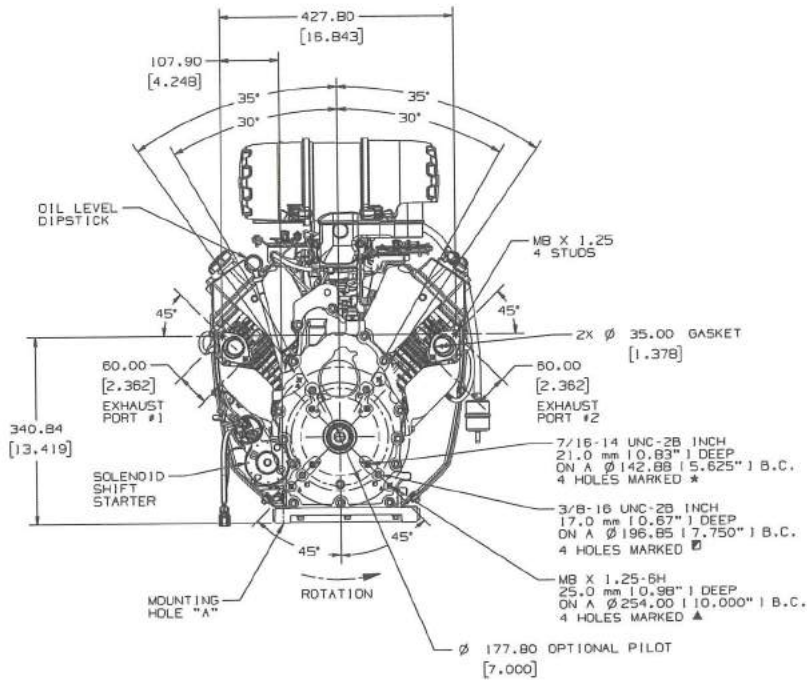
## 32.5-37 HP HORIZONTAL-SHAFT ENGINES HEAVY-DUTY AIR CLEANER



STARTER SIDE VIEW

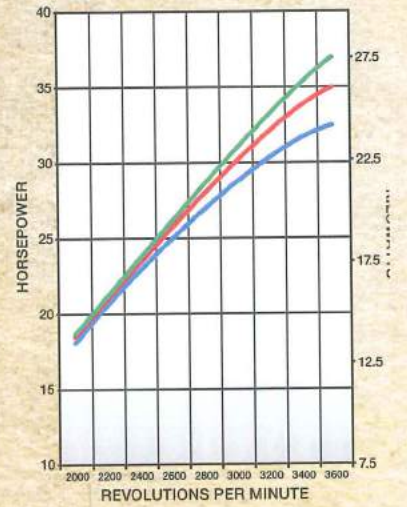


# 32.5-37 HP HORIZONTAL-SHAFT ENGINES HEAVY-DUTY AIR CLEANER

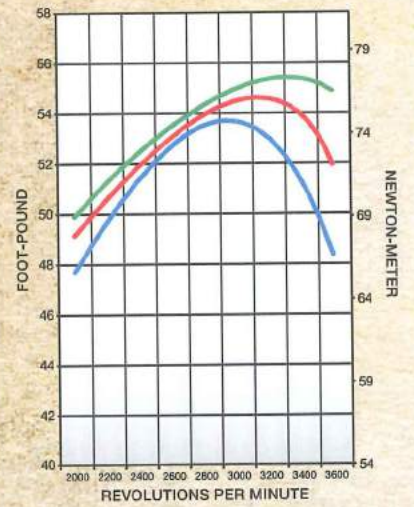


PTO VIEW

OIL FILTER VIEW



Maximum Power



Maximum Torque

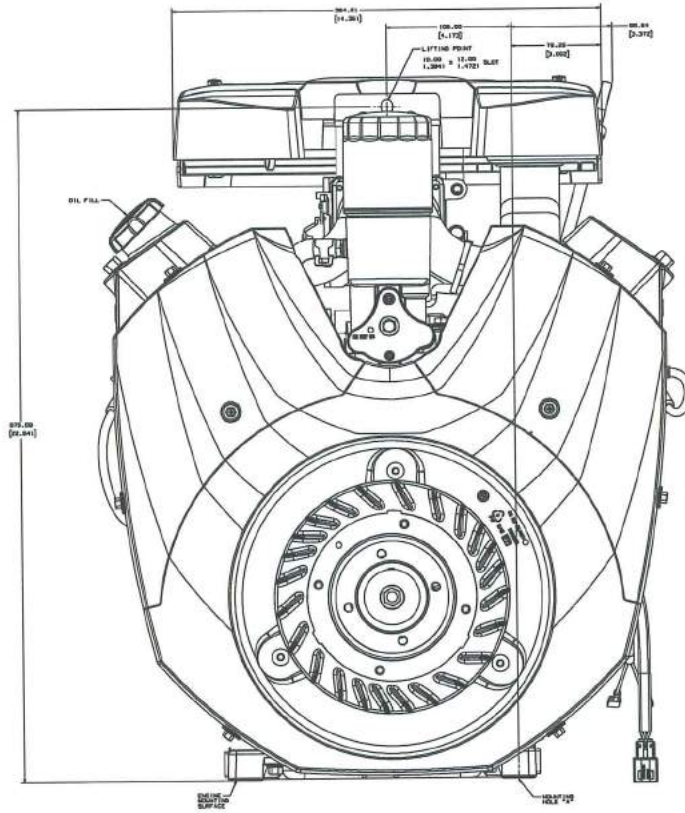
RATED AT 3600 RPM  
PER SAE J1940 GROSS

# KOHLER® COMMAND PRO® 32.5-37 HP

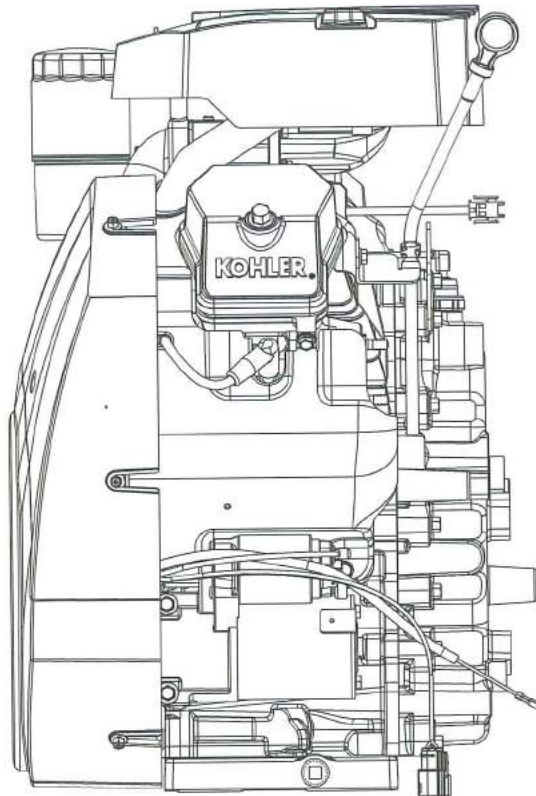
## ENGINE ARCHITECTURE

FRONT VIEW

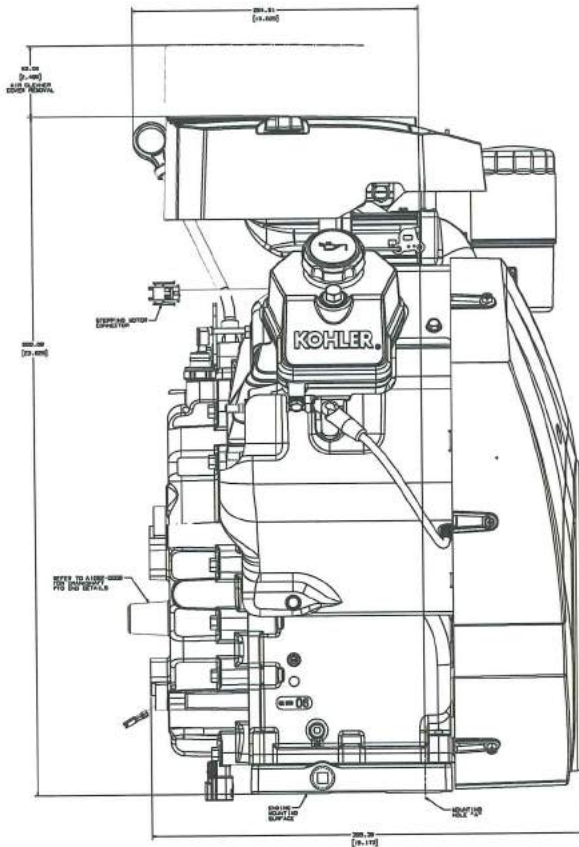
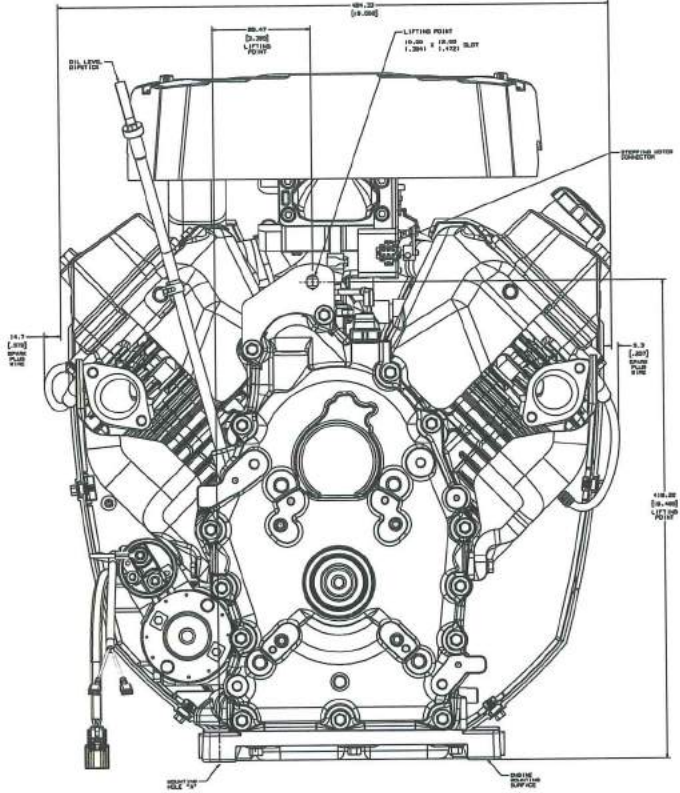
### 32.5-37 HP HORIZONTAL-SHAFT ENGINES LOW-PROFILE AIR CLEANER



STARTER SIDE VIEW



# 32.5-37 HP HORIZONTAL-SHAFT ENGINES LOW PROFILE AIR CLEANER



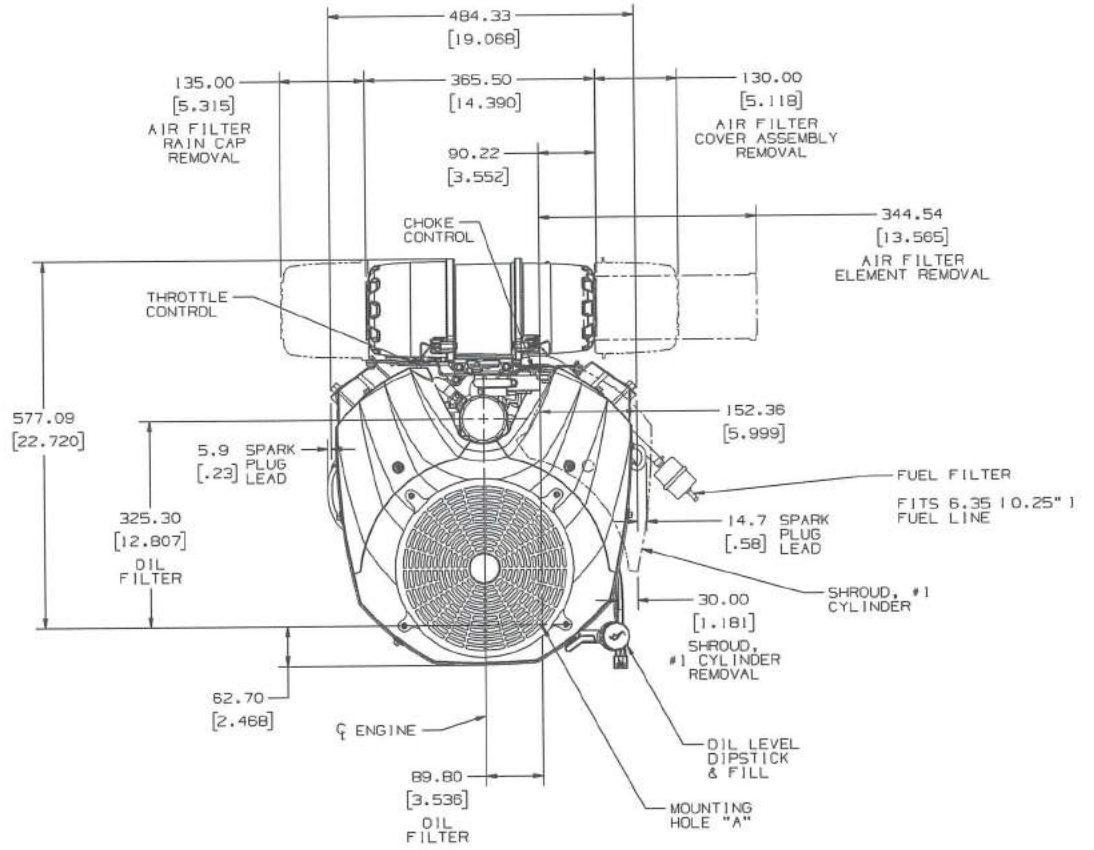
PTO VIEW ▾

OIL FILTER VIEW ▾

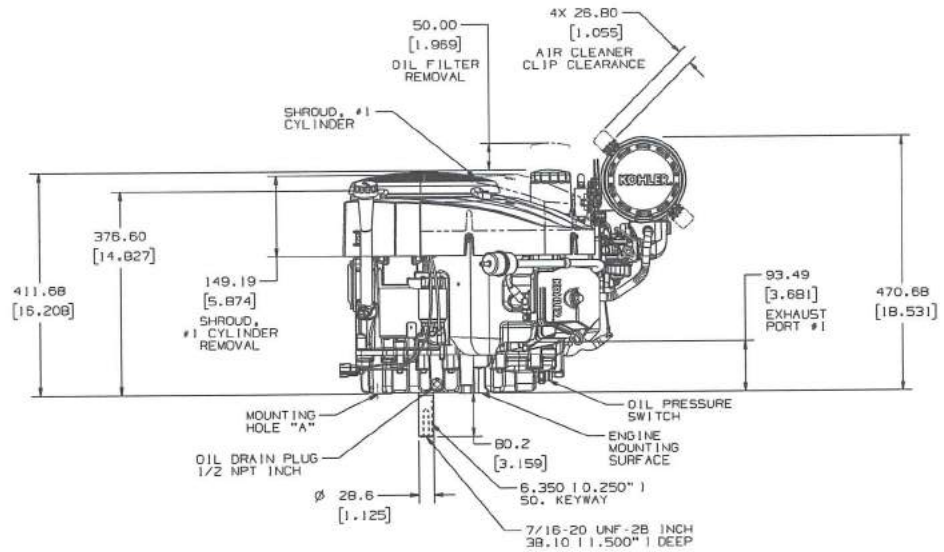
# KOHLER® COMMAND PRO® 32.5-37 HP ENGINE ARCHITECTURE

## 32.5-37 HP VERTICAL-SHAFT ENGINES HEAVY-DUTY AIR CLEANER

TOP VIEW

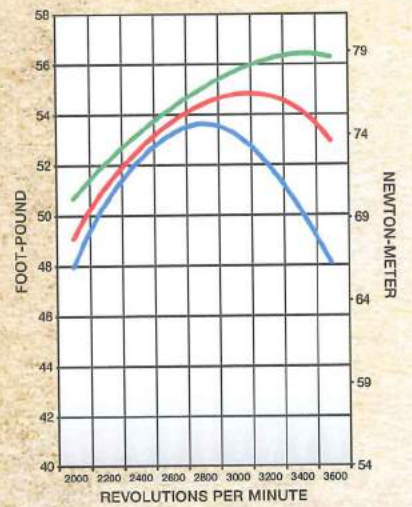
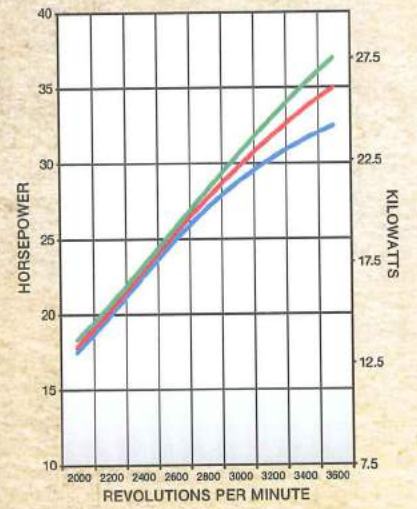
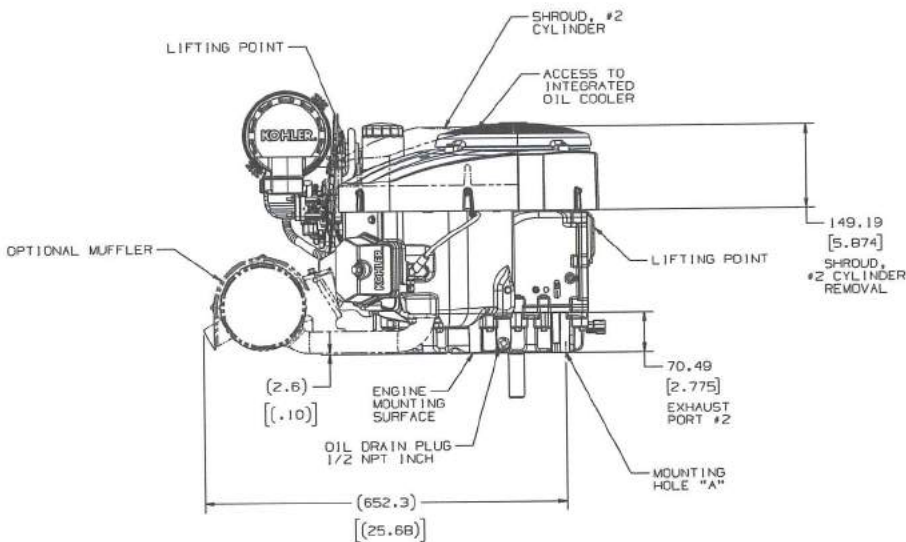
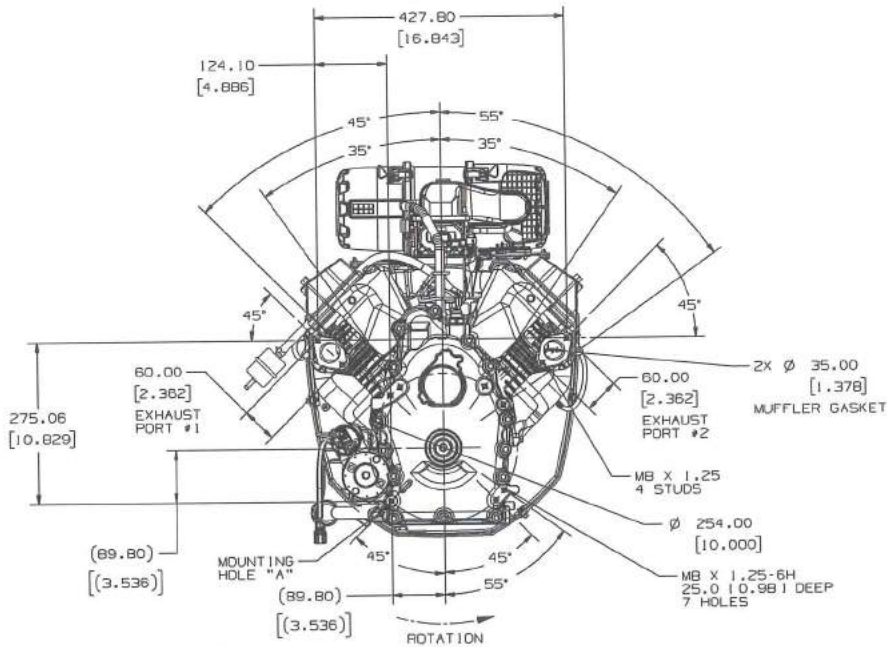


STARTER VIEW





# 32.5-37 HP VERTICAL-SHAFT ENGINES HEAVY-DUTY AIR CLEANER



RATED AT 3600 RPM  
PER SAE J1940 GROSS

## KOHLER Command PRO.

Engine Type		Four-cycle; gasoline; OHV; cast-iron cylinder liners; aluminum block; large-capacity air, fuel and oil filters; high-performance spark plugs; two-barrel carburetor; hydraulic valve lifters					
Model		CH940	CV940	CH980	CV980	CH1000	CV1000
Power @ 3600 rpm	Maximum hp (kW)	32.5 (24.2)		35 (26)		37 (27.5)	
Displacement	cu in (cc)	61 (999)					
Bore	in (mm)	3.5 (90)					
Stroke	in (mm)	3.1 (78.5)					
Peak Torque @ Maximum rpm	ft lb (Nm)	53.5 (72.5) @ 2800 rpm	53.6 (72.7) @ 2600 rpm	54.5 (73.9) @ 3200 rpm	54.6 (74.0) @ 3000 rpm	55.3 (75.0) @ 3400 rpm	56.3 (76.4) @ 3400 rpm
Compression Ratio		8.8:1					
Dry Weight	lb (kg)	132 (59)	127 (57)	132 (59)	127 (57)	132 (59)	127 (57)
Lubrication		Pressure lubrication with full-flow filter					
Oil Capacity with Filter	U.S. qt (L)	2.9 (2.75)	3.1 (2.9)	2.9 (2.75)	3.1 (2.9)	2.9 (2.75)	3.1 (2.9)
Dimensions L x W x H	in (mm)	*CH = 15.3 x 19.0 x 27.5 (388 x 484 x 699) **CV = 25.2 x 19.0 x 18.5 (640 x 484 x 470)					

Rated at 3600 rpm per SAE J1940 Gross.

\*L = front to rear of engine W = valve cover to valve cover H = mounting surface to top of air cleaner

\*\*L = blower housing to HD air cleaner W = valve cover to valve cover H = mounting surface to top of air cleaner

### Standard Features

- Hydraulic valve lifters for quiet operation, no adjustments
- High-efficiency fan and screen for superior cooling and longer engine life
- Two-barrel carburetor for high performance
- 15-amp charging, regulated
- Front-mount controls for easy operation and OEM installation
- Easily accessible service points
- Full-pressure lube with filter and Oil Sentry™ automatic warning/shutdown system
- Large dual drains for faster oil changes
- Hardened crank journals for long life
- Mechanical fuel pump on horizontals, pulse pump on verticals
- 12-volt solenoid shift starter
- Electronic ignition with high-performance spark plugs
- Solenoid fuel shutdown to limit afterbang

### 3-Year Limited Warranty

### Popular Factory Options

- Canister mufflers with right, left and center outlets
- Filter minder for heavy-duty air cleaner
- Guard for rotating grass screen
- Engine-mounted controls (CH)
- Remote oil filter
- Exhaust deflector
- Spark arrestor
- 20- and 25-amp charging systems
- 1<sup>1</sup>/<sub>8</sub>- and 1<sup>1</sup>/<sub>16</sub>-inch crankshaft diameters
- Front drive shaft
- Customer mounting pilot (CH)
- EMC- and RFI-compliant
- California-compliant models available

## HERITAGE // KOHLER POWERS THE EARTH.

Nearly a century ago, the first KOHLER® engines worked sunup to sundown on American farms. Now they power hard-working equipment for construction, power washing, welding, lawn and landscape, and yes - agriculture.

From the world's first four-cycle, water-cooled gas engine in 1920 to the diesel engines we developed for the U.S. Navy in WWII to the industry's first electronic fuel-injected engine, we've built our reputation on high-quality engines that get the job done. Every time.

## DURABILITY // BUILT FOR THE LONG HAUL.

We know the torture you put an engine through. Sixteen-hour days. Punishing weather. Monster inclines. So we make sure it lasts. Every engine is Kohler-engineered and extensively tested using stringent Kohler quality criteria.

You rely on us to make a living. We won't let you down.

## PARTS & SERVICE // WE'VE GOT YOUR BACK.

We stand behind our dealers, and they stand behind our warranty. It's customer first, every time. Need a replacement part? It's in stock now, period. There are 13,000 dealers in our service network, so if yours doesn't have it, he'll get it in 48 hours or less.

### KOHLER GENUINE PARTS

Only Kohler Engines makes genuine parts for KOHLER engines. They're built for the long haul. And designed to give you peace of mind.



Get more at **KohlerEngines.com**

For more information, contact your KOHLER source of supply.  
Or call toll-free in the U.S. and Canada 800-544-2444.

Kohler Co., Kohler, Wisconsin 53044 Tel 920-457-4441 Fax 920-459-1570

**KohlerEngines.com**

© 2013 by Kohler Co. All rights reserved.  
Kohler® and Command PRO® are trademarks of Kohler Co.

**KOHLER** Engines

Printed in U.S.A. E-2130-D 10/13