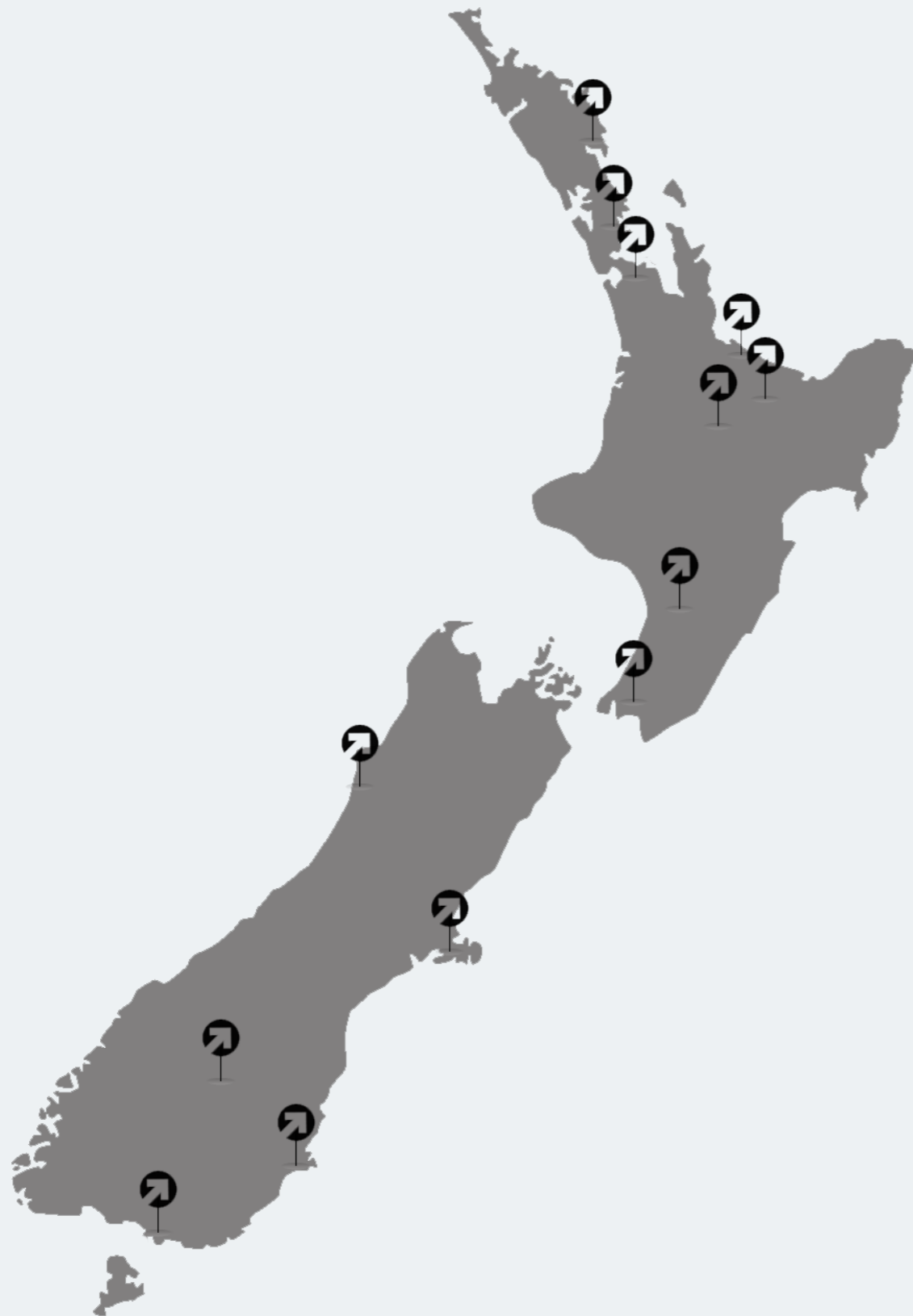
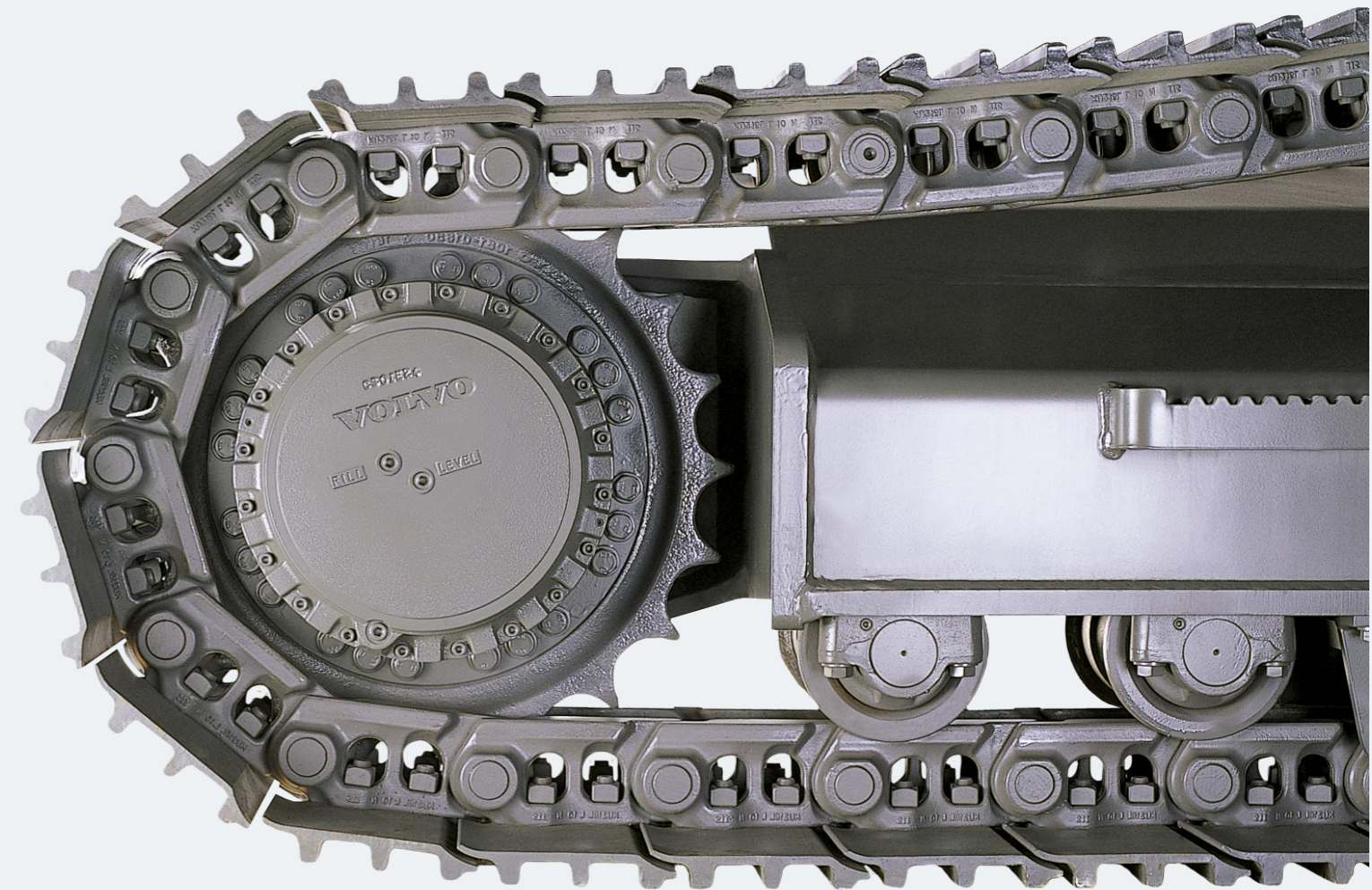




# GENUINE VOLVO UNDERCARRIAGE PARTS

FOR VOLVO CONSTRUCTION EQUIPMENT



**Branches:**

CHRISTCHURCH (HEAD OFFICE), WHANGAREI, AUCKLAND, TAURANGA, ROTORUA, TAUPO,  
PALMERSTON NORTH, WELLINGTON, GREYMOOUTH, CROMWELL, DUNEDIN, INVERCARGILL

SPARES//SALES//SERVICE

**FREEPHONE 0800 848 267**

[www.transdiesel.com](http://www.transdiesel.com)



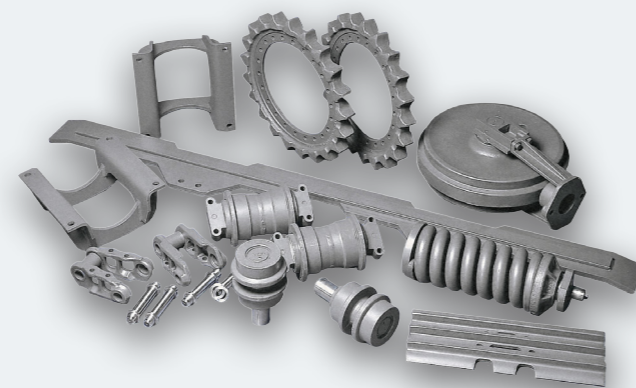
# GENUINE UNDERCARRIAGE PARTS

The excavator's undercarriage does a hero's job. It supports the total weight of the machine and is continuously subjected to rocks and other obstacles when in operation. Many of its parts are exposed to constant wear and stress. By keeping the undercarriage in good condition, you can count on the machine to always work safely and effectively, even in the most demanding operating conditions. An undercarriage in poor condition can lead to serious problems such as: reduced machine safety, reduced stability, increased fuel consumption, shortened machine life or risk of unplanned downtime.

## WHY USE GENUINE VOLVO UNDERCARRIAGE PARTS?

- Genuine Volvo Parts have been developed by Volvo engineers specifically for your Volvo Construction Equipment as part of a complete system, and function optimally with the rest of the drive train
- Quality always pays off in the long run!
- High resistance to load and impact. The parts have been subjected to the toughest tests to be able to withstand extreme stresses over and over again
- High parts availability and fast deliveries ensures downtime is kept to an absolute minimum
- High operating reliability
- Meet the highest standards of safety
- Long and productive service life
- Low operating costs during the life of the machine
- Made by Volvo for Volvo!
- Covered by full Volvo Parts Warranty\*

\* Terms and conditions apply



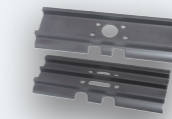
**You can rely on the guaranteed superior performance and high quality of Genuine Volvo Undercarriage parts. Contact us for a FREE Undercarriage Inspection**

## PRODUCT RANGE

### 1. Track Chains and Links



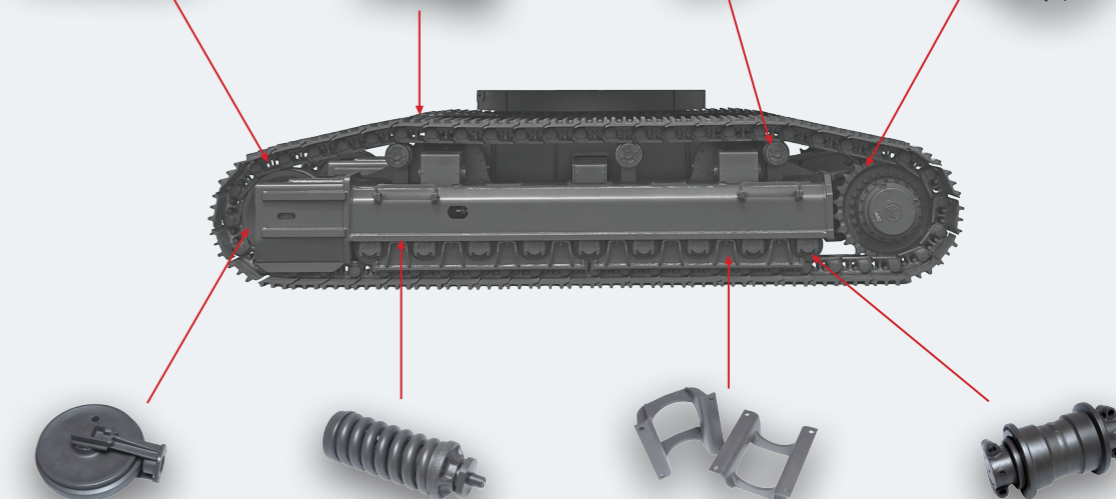
### 2. Track Shoes



### 3. Top Rollers



### 4. Sprockets



### 5. Idlers



### 6. Spring Packages



### 7. Track Guards



### 3. Bottom Rollers



**1. Track Chains and Links** - Optimised hardening depth of the link surface gives less wear and reduced load on surfaces subjected to high pressure. This minimising any risk of failure due to fatigue, while optimised hardening depth of pin and bushing guarantees longer wear life. The repair kit for track links, when only links need to be replaced, is available in sets of 1 or 3 links. Track chains are sealed and greased.

**2. Track Shoes** - A heat treatment process provides precise balance between impact toughness and hardness for maximum service life and reduced risk of deformation and failure. A variety of track shoes and track shoes options covering most work environments are available.

**3. Bottom and Top Rollers** - The rollers are forged and deep hardened for long service life and enduring strength. The differentiated hardening results in a hard surface that withstands tough wear and an elastic core that can cope with enormous impacts and shock loads. Bi-metal bushing provides improved bearing characteristics and minimizes wear. Extreme pressure oil for the bottom roller contributes to effective lubrication in travel intensive and tough applications.

**4. Sprockets** - Volvo sprockets have very high resistance to wear, breakage and distortion with hardened wear surfaces for maximum hardness. The self-cleaning design reduces dirt build up and wear for maximum reliability and performance in extremely severe operating conditions. Reinforced tooth root further increases durability.

**5. Idlers** - Volvo (front) idlers have a robust design with hardened running and guiding surfaces for demanding operating conditions. Chromium and molybdenum alloyed steel in the idler wheel, provides maximum service life. The sliding area on the bracket reduces contact pressure, reducing wear.

**6. Spring Packages** - Volvo spring packages are designed for demanding work in different environments, year after year. High-strength cylinder piston material prevents deflection and further increases reliability. Chromium plating of the piston improves corrosion resistance.

**7. Track Guards** - The track guards guide the track chains between the flanges on the bottom rollers to minimize the risk of derailing, which increases the life time of the track chain and bottom rollers. The strong design counteracts risk of distortion.