

V O L V O



Volvo Excavators 72.8-74.9 t 534 hp

EC750E

Volvo Construction Equipment

A passion for performance

At Volvo Construction Equipment, we're not just coming along for the ride. Developing products and services that raise productivity – we are confident we can lower costs and increase profits for industry experts. Part of the Volvo Group, we are passionate about innovative solutions to help you work smarter – not harder.

Helping you to do more.

Doing more with less is a trademark of Volvo Construction Equipment. High productivity has long been married to low energy consumption, ease of use and durability. When it comes to lowering life-cycle costs, Volvo is in a class of its own.

Designed to fit your needs.

There is a lot riding on creating solutions that are suited to the particular needs of different industry applications. Innovation often involves high technology – but it doesn't always have to. Some of our best ideas have been simple, based on a clear and deep understanding of our customers' working lives.



You learn a lot in 180 years.

Over the years, Volvo has advanced solutions that have revolutionized the use of construction equipment. No other name speaks Safety louder than Volvo. Protecting operators, those around them and minimizing our environmental impact are traditional values that continue to shape our product design philosophy.

We're on your side.

We back the Volvo brand with the best people. Volvo is truly a global enterprise, one that is on standby to support customers quickly and efficiently – wherever they are.

We have a passion for performance.



Volvo Trucks



Renault Trucks



Mack Trucks



UD Trucks



Volvo Buses



Volvo Construction Equipment



Volvo Penta



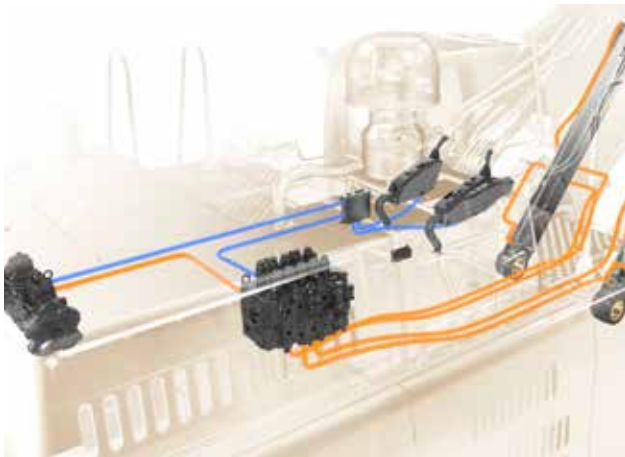
Volvo Financial Services

Do more for less

Gain more profitability and productivity in the EC750E. The Volvo crawler excavator offers the perfect combination of power and stability to handle a higher capacity in the toughest applications. Industry-leading fuel efficiency, innovative electro-hydraulic technology and ECO Mode help to optimize production and maximize your return on investment.

Total control

For a more productive and fuel efficient operation, the new electro-hydraulic system puts superior control in the operator's hands. Utilizing intelligent technology, the easy-to-use system controls on-demand flow and reduces internal losses in the hydraulic circuit.



Operator's choice

Take on the most demanding working environments from the comfort of Volvo's industry-leading cab. The low noise cab provides ample storage and leg room, 12 air-conditioner vents and adjustable seat, keeping the operator fresh, alert and focused – longer. Ergonomically positioned interfaces – including the joysticks, keypad and LCD monitor – and clear all-around visibility helps you share the strong, work-all-day feeling your machine has.



Outstanding fuel efficiency

Achieve outstanding fuel efficiency with Volvo's unique ECO Mode. ECO Mode optimizes the hydraulic system to reduce loss of flow and pressure – resulting in improved fuel efficiency without any loss of performance in most operating conditions.





POWERED BY VOLVO

Rely on a superior performance from the EC750E to do the bigger jobs better, stronger and faster. Equipped with a powerful Volvo D16 engine, the machine utilizes advanced technology built on decades of experience, delivering increased horsepower and fuel efficiency – that benefits your bottom line.



SUPERIOR DIGGING PERFORMANCE

Get the job done in even the most demanding conditions with the EC750E's outstanding digging force. Powered by Volvo's advanced electro-hydraulic technology, the EC750E digs, swings and loads more materials in any application.

Winning performance

No task is too tough for the powerful EC750E. Whether you're working at a mine, a quarry or in heavy construction applications, the EC750E offers superior digging performance, outstanding fuel efficiency and quick cycle times for a maximum return on investment.

The right mode for the job

Achieve optimum fuel efficiency and machine performance with Volvo's unique, integrated work mode system. Maximizing efficiency, the system allows operators to choose the best work mode for the task at hand - select from I (Idle), F (Fine), G (General), H (Heavy) and P (Power max).



Get more done in less time

Cut cycle times to a minimum and increase profitability with the newly developed fully electro-hydraulic system. The Volvo hydraulic system in combination with the high power and massive torque from the Volvo D16 engine gets more done in less time. Offering faster cycle times, the EC750E ensures greater control, reduces operation costs and maximizes uptime.



Designed for distance

Delivering more power, better productivity and ease of moving around your jobsite, the machine's high system pressure and durable track ensure impressive tractive force when climbing gradients and travelling over unstable ground. Experience superior access to hard-to-reach areas of your job site.



Solid stability

Operators can work with confidence in challenging environments with outstanding stability in the EC750E. Operate adverse terrains in the well-balanced and solid machine, which features a wide track gauge, long track length, a retractable undercarriage, and an optimized counterweight.



Built to work for you

Always available and ready for any application, the durable EC750E is designed for maximum uptime. The machine's heavy-duty design, reliable and wear-resistant components, and easy service access ensure you will get the job done quickly and without delay.

Proven reliability

Count on a solid, reliable EC750E with Volvo's high-quality components, designed to work in perfect harmony with the machine. Volvo's commitment to rigorous testing in its development process ensures the production of well-engineered components, purpose-built for the job, and proven to be reliable in the toughest applications.



Easy service access

Maximize uptime with quick and safer servicing. Essential maintenance points are easily accessed via the wide-opening and conveniently located compartment doors using central and surrounding walkways.



Durable by design

Achieve non-stop production with the durable and reliable EC750E. Built with protected components, including a strong frame structure, the machine can be relied on for longevity and sustained uptime in demanding applications. A built-in, heavy-duty plate is featured for additional protection to the underside of the machine.



Robust protection

For added safety and durability, optional FOG (Falling Object Guard) and FOPS (Falling Object Protective Structure) certified cabs provide peace-of-mind for working in tough applications. The EC750E can also be fitted with a full length track guard for added protection.





BOOM AND ARM

Maximize machine uptime and performance for any job application with the reinforced heavy duty boom and arm built from high strength tensile steel. Designed for maximum reliability in even the most severe conditions, steel strips are welded under the arm for added protection and various boom and arm configurations are available to suit any bucket size or application.



GENUINELY VOLVO

Volvo's attachments have been purpose-built to work in perfect coordination with Volvo machines, forming one solid, reliable unit. With functions and properties ideally matched, Volvo attachments are an integrated part of the excavator for which they're intended – delivering maximum productivity.

Robust attachments to match

With a Volvo excavator crawler and a Volvo attachment you simply get more done. Thanks to Volvo's wide range of attachments, including the durable and hardworking general purpose, heavy duty and extreme-duty buckets, you can get the most out of your machine. Easily tailor the EC750E exactly for the applications and the conditions of your worksite.

Heavy-duty and extreme-duty buckets

Volvo's heavy-duty and extreme-duty buckets are built using wear resistant plates, excel at digging compact materials including loose rock, hard clay and gravel. They are perfect for quarrying and mining applications and are made of reinforced high quality durable materials for a long life and superior performance. Custom made buckets are available in some regions – consult your dealer.



Genuine Volvo teeth, cutters and edges

Volvo buckets are built with high tensile steel to increase the bucket's durability, and they are available from the factory* with a wide range of teeth, side cutters, segments, and wear shrouds to protect the bucket and prolongs its lifespan in the harshest working conditions. *Attachments are available for loose order in some regions, contact your dealer for more information.



Hydraulic breaker

The EC750E can be equipped with a Volvo hydraulic breaker built to break even most demanding materials. With consistent power and high breaking force you'll benefit from maximum impact and durability. Set your Volvo breaker at the right frequency to suit your application needs.



Attachment management system

The password protected attachment management system allows storage for up to 20 different attachments. The system allows the operator to pre-set hydraulic flow and pressure inside the cab through the monitor, which ensures the use of various attachments, for increased versatility.



Up to the challenge

Boom and arm

Maximize machine uptime and performance for any job application with the reinforced heavy duty boom and arm.

Total control

The electro-hydraulic system controls on-demand flow and reduces internal losses in the hydraulic circuit.

Attachment management system

The password protected attachment management system allows storage for 20 different attachments for added versatility.

Genuine Volvo teeth, cutters and edges

Volvo buckets are available from the factory with a wide range of parts to prolong its lifespan in the harshest working conditions.

Genuinely Volvo

With functions and properties ideally matched, Volvo attachments are an integrated part of the excavator for which they're intended – delivering maximum productivity.

Superior digging performance

The EC750E features superior digging force, particularly when working with hard and heavy materials.



Proven reliability

Count on Volvo's high-quality components, designed to work in perfect harmony with your machine.

Operator's choice

The comfortable cab and ease of operation, even in adverse conditions, makes operators choose this machine.

Durable by design

Built with protected components, the EC750E can be relied on for longevity and sustained uptime.

Powered by Volvo

Rely on a top performance from the EC750E, featuring a powerful Volvo D16 engine for a fast and efficient operation.

Solid stability

Stable in challenging environments, its quality, reliable performance and durability is everything you expect from a Volvo.

Get more done in less time

Cut cycle times to a minimum with the newly developed fully electro-hydraulic system.

AdBlue®

Volvo offers a total AdBlue solution that is quality assured, cost efficient and easily accessible. Contact your Volvo dealer for more information.

® = registered trademark of the Verband der Automobilindustrie e.V. (VDA)

Customer Support Agreements

Customer Support Agreements offer preventive maintenance, total repairs and a number of uptime services.



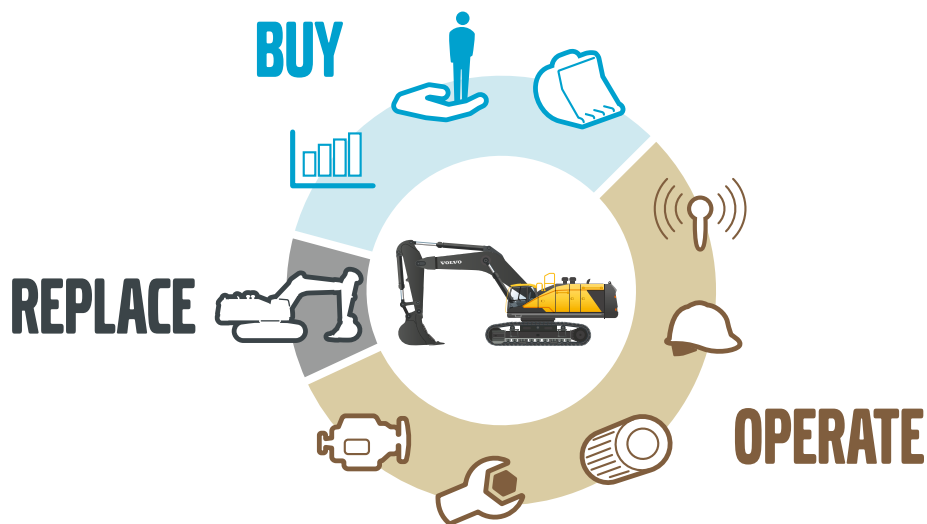
Adding value to your business

Being a Volvo customer means having a complete set of services at your fingertips. Volvo can offer you a long-term partnership, protect your revenue and provide a full range of customer solutions using high quality parts, delivered by passionate people. Volvo is committed to increasing the positive return on your investment and maximising uptime.

Complete Solutions

Volvo has the right solution for you. So why not let us provide all your needs throughout the whole life cycle of your machine? By

listening to your requirements, we can reduce your total cost of ownership and increase your revenue.



Genuine Volvo Parts

Our attention to detail is what makes us stand out. This proven concept acts as a solid investment in your machine's future. Parts are extensively tested and approved because every part is vital for uptime and performance. Only by using Genuine Volvo Parts, can you be sure that your machine retains the renowned Volvo quality.

Service Network

In order to respond to your needs faster, a Volvo expert is on their way to your job site from one of our Volvo facilities. With our extensive infrastructure of technicians, workshops and dealers, Volvo has a comprehensive network to fully support you using local knowledge and global experience.





CUSTOMER SUPPORT AGREEMENTS

The range of Customer Support Agreements offer preventive maintenance, total repairs and a number of uptime services. Volvo uses the latest technology to monitor machine operation and status, giving you advice to increase your profitability. By having a Customer Support Agreement you are in control of your service costs.

EC750E in detail

Engine

The latest generation, Volvo engine Stage V emissions compliant diesel engine fully meets the demands of the latest, emissions regulations. Featuring Volvo Advanced Combustion Technology (V-ACT), it is designed to deliver superior performance and fuel efficiency. The engine uses precise, high-pressure fuel injectors, turbo charger and air-to-air intercooler, and electronic engine controls to optimize machine performance.

Air Filter: 3-stage with precleaner

Automatic Idling System: Reduces engine speed to idle when the levers and pedals are not activated resulting in less fuel consumption and low cab noise levels.

Engine	Volvo	D 16J
Max power at	r/min	1 800
Net, ISO 9249/SAE J1349	kW	392
	hp	533
Gross, ISO 14396/SAE J1995	kW	393
	hp	534
Max torque	Nm	2 570
at engine speed	r/min	1 350
No. of cylinders		6
Displacement	l	16.1
Bore	mm	144
Stroke	mm	165

Electrical system

High-capacity electrical system that is well protected. Waterproof double-lock harness plugs are used to secure corrosion-free connections. The main relays and solenoid valves are shielded to prevent damage. The master switch is standard. Contronics provides advanced monitoring of machine functions and important diagnostic information.

Voltage	V	24
Batteries	V	2x12
Battery capacity	Ah	200
Alternator	V/A	28/130

Undercarriage

The undercarriage has a robust X-shaped frame. Greased and sealed track chains are standard.

Track shoes		48x2
Link pitch	mm	260.4
Shoe width, double grouser	mm	650/750/900
Bottom rollers		8x2
Top rollers		3x2

Swing system

The swing system uses an axial piston motors, driving a planetary gearbox for maximum torque. An automatic holding brake and anti-rebound valve are standard.

Max. slew speed	r/min	7
Max. slew torque	kNm	275.5

Travel System

Each track is powered by an automatic two-speed shift travel motor. The track brakes are multi-disc, spring-applied and hydraulic released. The travel motor, brake and planetary gears are well protected within the track frame.

Max. drawbar pull	kN	472
Max. travel speed (low)	km/h	2.9
Max. travel speed (high)	km/h	4.6
Gradeability	°	33

Service Refill

Fuel tank	l	872
DEF/AdBlue® tank	l	80
Hydraulic system, total	l	655
Hydraulic tank	l	350
Engine oil	l	52
Engine coolant	l	66
Slew reduction unit	l	2 x 6.5
Travel reduction unit	l	2 x 13.5

Hydraulic System

The new electro-hydraulic system and new MCV (main control valve) use intelligent technology to control on-demand flow for high-productivity, high-digging capacity and excellent fuel economy. The summation system, boom, arm and swing priority along with boom, arm and bucket regeneration provides optimum performance.

The following important functions are included in the system:

Summation system: Combines the flow of both hydraulic pumps to ensure quick cycle times and high productivity.

Boom priority: Gives priority to the boom operation for faster raising when loading or performing deep excavations.

Arm priority: Gives priority to the arm operation for faster cycle times in leveling and for increased bucket filling when digging.

Swing priority: Gives priority to swing functions for faster simultaneous operations.

Regeneration system: Prevents cavitation and provides flow to other movements during simultaneous operations for maximum productivity.

Holding valves: Boom and arm holding valves prevent the digging equipment from creeping.

Main pump. Type 2 x variable displacement axial piston pumps

Maximum flow	l/min	2x450
--------------	-------	-------

Pilot pump. Type Gear pump

Maximum flow	l/min	1x32.5
--------------	-------	--------

Max. pressure

Implement	MPa	33.8/35.8
Travel circuit	MPa	33.8
Slew circuit	MPa	26.5
Pilot circuit	MPa	3.9

Hydraulic Motors

Travel: Variable displacement axial piston motor with mechanical brake

Slew: Fixed displacement axial piston motor with mechanical brake

Hydraulic Cylinders

Mono boom		2
Bore x Stroke	ø x mm	200 x 1 790
Arm		1
Bore x Stroke	ø x mm	215 x 2 070
Bucket		1
Bore x Stroke	ø x mm	190 x 1 450
ME Bucket		1
Bore x Stroke	ø x mm	200 x 1 450

Cab

The operator's cab has easy access via a wide door opening. The cab is supported on hydraulic dampening mounts to reduce shock and vibration levels. These along with sound absorbing lining provide low noise levels. The cab has excellent all-round visibility. The front windshield can easily slide up into the ceiling, and the lower front glass can be removed and stored in the side door.

Integrated air-conditioning and heating system: The pressurized and filtered cab air is supplied by an automatically-controlled fan. The air is distributed throughout the cab from 14 vents.

Ergonomic operator's seat: The adjustable seat and joystick console move independently to accommodate the operator. The seat has 12 different adjustments plus a seat belt for the operator's comfort and safety. Refrigerant of the type R134a is used when this machine is equipped with air conditioning.

Contains fluorinated greenhouse gas R134a, Global Warming Potential 1.430 t CO₂-eq

Sound Level

Sound pressure level in cab according to ISO 6396		
L _{pA}	dB	72
External sound level according to ISO 6395 and EU Noise Directive 2000/14/EC		
L _{WA}	dB	108

Specifications

GROUND PRESSURE

Description		EC750E									
		Boom 6.6 m, Arm 2.9m, Bucket 5.16m ³			Boom 7.1m, Arm 2.9m, Bucket 5.16m ³			Boom 7.7 m, Arm 3.55m, Bucket 3.3m ³			
		Counterweight 12 100kg			Counterweight 12,100kg			Counterweight 12 100kg			
Shoe width	Operating weight	Ground pressure	Overall width	Shoe width	Operating weight	Ground pressure	Overall width	Operating weight	Ground pressure	Overall width	
	kg	kPa	mm		mm	kg	kPa		mm	kg	kPa
Double grouser	650	74 000	107.5	4 185	650	74270	107.9	4185	73 100	106.2	4 185
	750	74 700	94.1	4 190	750	74940	94.4	4190	73 800	93.0	4 190
	900	75 800	79.6	4 340	900	76070	79.8	4340	74 900	78.6	4 340

BUCKET SELECTION GUIDE

Bucket type		Capacity	Cutting width	Weight	Teeth	EC750E					
						6.6m Boom		7.1m Boom		7.7m Boom	
						650mm shoe, 12 100kg counterweight					2.9m
		m ³	mm	kg	EA	2.9m	2.9m	2.9m	3.55m	4.2m	
Direct fit Buckets(V4)	General Purpose	3.30	1720	3.27	4	C	C	C	C	C	
		4.00	2000	3.83	5	C	C	C	C	B	
		4.40	2150	4.025	5	C	C	C	B	A	
		4.65	2250	4.145	5	C	C	B	B	A	
		4.85	2330	4.26	5	C	C	B	A	A	
		5.16	2450	4.485	6	C	C	B	A	X	
	Heavy Duty	5.60	2350	4.55	5	C	B	A	A	X	
		6.10	2510	4.845	6	B	A	A	X	X	
		1.99	1200	2.85	4	D	D	D	D	D	
		3.30	1720	3.69	4	D	D	D	D	C	
		4.00	2000	4.275	5	D	D	C	B	B	
		4.40	2150	4.485	5	D	D	B	B	A	
		4.65	2250	4.615	5	D	C	B	A	A	
		4.85	2330	4.67	5	D	C	B	A	X	
		5.16	2450	4.995	6	C	B	A	A	X	
		5.60	2350	4.935	5	C	B	A	X	X	
		Extreme duty	4.65	2290	5.33	5	D	C	A	X	X
			5.16	2490	5.52	5	C	B	A	X	X
5.60	2350		5.435	5	B	B	A	X	X		
4.20	2140		5.225	4	D	C	B	A	A		
4.40	2200		5.32	4	D	C	B	A	X		
4.20	2140		4.86	4	D	D	B	B	A		
Direct fit Buckets(V6)	Heavy Duty	4.40	2200	4.96	4	D	C	B	A	A	
		4.60	2300	5.415	4	D	C	A	A	X	

Please consult with your Volvo dealer for the proper match of buckets and attachments to suit the application.

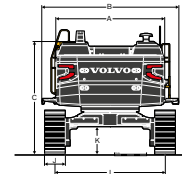
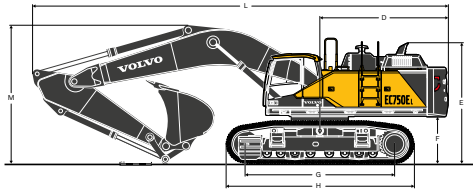
The recommendations are given as a guide only, based on typical operation conditions.

Bucket capacity based on ISO 7451, heaped material with a 1:1 angle of repose.

Maximum material density

A	1 200 kg/m ³
B	1 500 kg/m ³
C	1 800 kg/m ³
D	2 100 kg/m ³
X : Not recommended	

DIMENSIONS



Description	Unit	EC750E				
		6.6	7.1	2.9	3.55	4.2
Boom	m	6.6	7.1	2.9	3.55	4.2
Arm	m	2.9	2.9	2.9	3.55	4.2
A Overall width of superstructure	mm	3 420	3 420	3 420	3 420	3 420
B Overall width (Upper Structure)	mm	4 290	4 286	4 290	4 290	4 290
C Overall height of cab	mm	3 520	3 520	3 520	3 520	3 520
D Tail swing radius	mm	4 140	4 140	4 140	4 140	4 140
E Overall height of diffuser	mm	3 850	3 850	3 850	3 850	3 850
Overall height of guard rail	mm	4 000	4 000	4 000	4 000	4 000
Overall height of engine hood	mm	3 540	3 540	3 540	3 540	3 540
Overall height of rain cap	mm	3 790	-	3 790	3 790	3 790
Overall height of cyclone	mm	3 850	-	3 850	3 850	3 850
Overall height of oil bath	mm	4 100	-	4 100	4 100	4 100
F Counterweight clearance *	mm	1 507	1 507	1 507	1 507	1 507
G Tumbler length	mm	4 750	4 750	4 750	4 750	4 750
H Track length	mm	5 990	5 990	5 990	5 990	5 990
I Track gauge (extended)	mm	3 440	3 440	3 440	3 440	3 440
Track gauge (retracted)	mm	2 750	2 750	2 750	2 750	2 750
J Shoe width	mm	650	650	650	650	650
K Min. ground clearance *	mm	858	858	858	858	858
L Overall length	mm	12 200	12 700	13 320	13 220	13 160
M Overall height of boom	mm	4 855	4 800	4 660	4 600	4 950

* With shoe grouser

Specifications

DIMENSIONS

Description	Unit	EC750E		
		6.6	7.1	7.7
Length	mm	6 940	7 440	8 040
Height	mm	2 530	2 430	2 210
Width	mm	1 100	1 100	1 100
Weight	kg	7 320	7 405	7 710

* Includes cylinder, piping and pin

Description	Unit	EC750E		
		2.9	3.55	4.2
Length	mm	4 280	4 960	5 600
Height	mm	1 530	1 410	1 380
Width	mm	740	740	740
Weight	kg	4 120	4 210	4 520

* Includes bucket cylinder, linkage and pin

Cylinder			
Length	Height	Width	Weight
mm	mm	mm	kg
2 525	560	370	710 x 2 set = 1 420

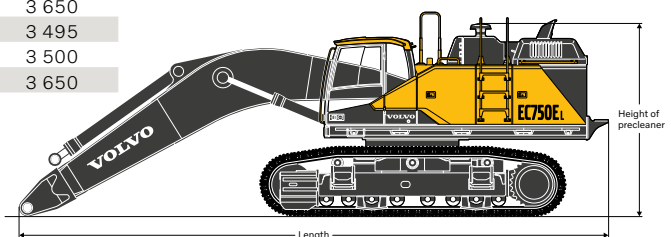
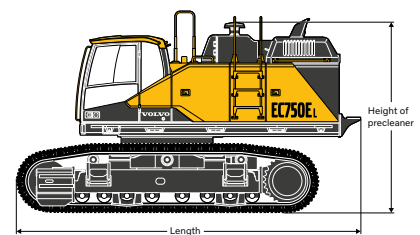
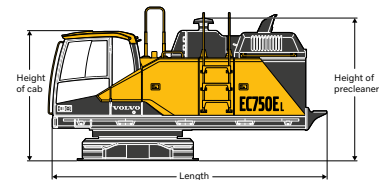
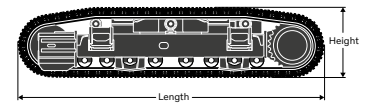
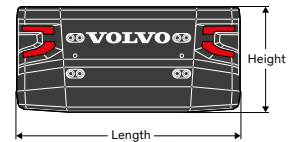
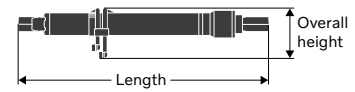
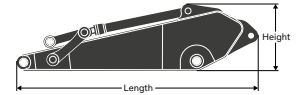
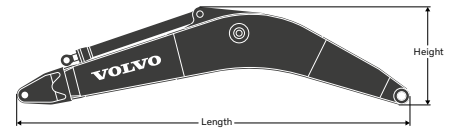
Counterweight			
Length	Height	Width	Weight
mm	mm	mm	kg
3 420	1 750	660	12 100

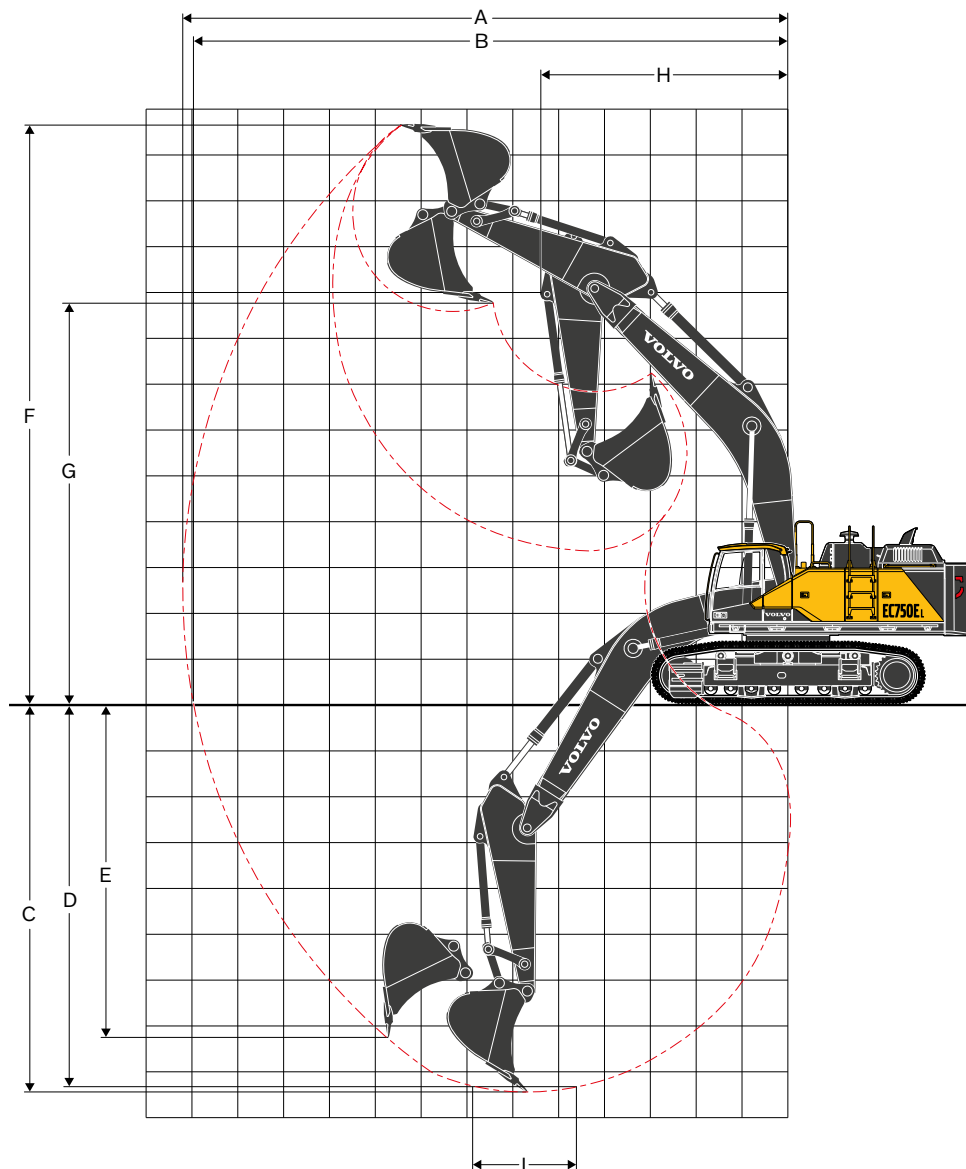
Undercarriage				
Shoe width	Length	Height	Overall width	Weight
mm	mm	mm	mm	kg
650	5 990	1 375	1 080	10 600 x 2
750	5 990	1 375	1 080	10 950 x 2
900	5 990	1 375	1 160	11 500 x 2

Superstructure without counterweight				
Length	Height of cab	Height of diffuser	Width	Weight
mm	mm	mm	mm	kg
5 550	2 655	2 995	3 430	23 150
* Height of rain cap	2 935	-	-	-
* Height of cyclone	2 995	-	-	-
* Height of oil bath	3 245	-	-	-

Superstructure including UC, excluding CWT				
Shoe width	Length	Height of diffuser	Overall width (retracted)	Weight
mm	mm	mm	mm	kg
650	6 780	3 850	3 495	44 350
750	6 780	3 850	3 500	45 050
900	6 780	3 850	3 650	46 150
* Height of rain cap	-	3 790	-	-
* Height of cyclone	-	3 850	-	-
* Height of oil bath	-	4 100	-	-

Superstructure, including UC and Boom, excluding CWT				
Boom	Shoe width	Length	Height of diffuser	Overall width (retracted)
m	mm	mm	mm	mm
6.6	650	10 190	3 850	3 495
	750	10 190	3 850	3 500
	900	10 190	3 850	3 650
7.1	650	10 759	3 850	3 495
	750	10 759	3 850	3 500
	900	10 759	3 850	3 650
7.7	650	11 350	3 850	3 495
	750	11 350	3 850	3 500
	900	11 350	3 850	3 650
* Height of rain cap	-	-	3 790	-
* Height of cyclone	-	-	3 850	-
* Height of oil bath	-	-	4 100	-





WORKING RANGES

Description	Unit	EC750E				
Boom	m	6.6	7.1	7.7		
Arm	m	2.9	2.9	2.9	3.55	4.2
A Max. digging reach	mm	11 460	11990	12 570	13 130	13 750
B Max. digging reach on ground	mm	11 160	11710	12 300	12 870	13 500
C Max. digging depth	mm	7 210	7610	7 720	8 370	9 020
D Max. digging depth (l = 2.44 m level)	mm	7 060	7460	7 570	8 240	8 900
E Max. vertical wall digging depth	mm	5 650	6100	6 740	7 390	8 010
F Max. cutting height	mm	10 940	11400	12 430	12 600	12 910
G Max. dumping height	mm	7 000	7430	8 450	8 650	8 970
H Min. front swing radius	mm	5 130	5350	5 460	5 390	5 430

DIGGING FORCES WITH DIRECT FIT BUCKET

Breakout force -bucket (Normal/ Power boost)	SAE J1179	kN	323/342	323/342	300/318	303/320	303/320
	ISO 6015	kN	362/383	362/383	336/356	339/359	339/359
Tearout force -dipper arm (Normal/ Power boost)	SAE J1179	kN	311/329	311/329	316/334	277/293	248/262
	ISO 6015	kN	319/337	319/337	322/341	282/298	252/266
Rotation angle, bucket		kN	174	174	174	174	174

Specifications

LIFTING CAPACITY EC750E

Lifting capacity at the arm end without bucket. For lifting capacity including bucket, simply subtract actual weight of the direct fit bucket or the bucket with quick coupler from the following values.

	Lifting hook related to ground level	4.5 m		6.0 m		7.5 m		9.0 m		10.5 m		Max. reach			
		Along UC	Across UC	Along UC	Across UC	Along UC	Across UC	Along UC	Across UC	Along UC	Across UC	Along UC	Across UC	Max. m	
Boom : 6.6m Arm : 2.9m Shoe : 750mm CWT : 12 100kg	9.0 m	kg											*16 400	*16 400	6.7
	7.5 m	kg					*19 940	*19 940					*15 240	*15 240	7.8
	6.0 m	kg			*22 880	*22 880	*20 430	20 410					*14 880	*14 880	8.6
	4.5 m	kg	*33 920	*33 920	*25 800	*25 800	*21 760	19 760	*16 820	14 740			*15 040	14 540	9.1
	3.0 m	kg	*39 030	*39 030	*28 770	26 640	*23 270	19 030	19 960	14 430			*15 680	13 770	9.3
	1.5 m	kg	*34 330	*34 330	*30 760	25 550	*24 380	18 410	19 640	14 130			*16 890	13 640	9.2
	0 m	kg	*41 570	39 680	*31 190	24 960	*24 610	18 020					*18 910	14 160	8.9
	-1.5 m	kg	*38 750	*38 750	*29 850	24 820	*23 410	17 930					*20 100	15 560	8.3
	-3.0 m	kg	*33 640	*33 640	*26 230	25 100							*19 670	18 600	7.4
-4.5 m	kg	*24 610	*24 610									*17 610	*17 610	6.0	
Boom : 7.1m Arm : 2.9m Shoe : 750mm CWT : 12 100kg	10.5 m	kg											*18 710	*18 710	6.8
	9.0 m	kg					*18 630	*18 630					*16 850	*16 850	8.2
	7.5 m	kg					*18 980	*18 980	*17 690	15 180			*15 990	14 560	9.2
	6.0 m	kg			*23 950	*23 950	*20 160	20 010	*17 960	14 950			*15 710	12 760	9.9
	4.5 m	kg			*27 010	26 750	*21 700	19 150	*18 650	14 510			*15 830	11 730	10.3
	3.0 m	kg			*29 490	25 230	*23 100	18 310	*19 360	14 050			15 560	11 210	10.4
	1.5 m	kg			*30 480	24 310	*23 930	17 680	19 160	13 670			15 480	11 110	10.4
	0 m	kg			*29 960	23 940	*23 890	17 310	18 900	13 430			15 970	11 440	10.1
	-1.5 m	kg	*28 620	*28 620	*28 210	23 910	*22 820	17 210	*18 440	13 390			*16 450	12 290	9.6
-3.0 m	kg	*29 990	*29 990	*25 120	24 170	*20 360	17 370					*15 770	13 990	8.8	
-4.5 m	kg	*23 670	*23 670	*19 980	*19 980	*15 030	*15 030					*14 120	*14 120	7.7	
-6.0 m	kg														
Boom : 7.7m Arm : 2.9m Shoe : 750mm CWT : 12 100kg	10.5 m	kg											*18 710	*18 710	6.8
	9.0 m	kg					*18 420	*18 420					*16 850	*16 850	8.2
	7.5 m	kg					*18 760	*18 760	*17 490	14 980			*15 990	14 350	9.2
	6.0 m	kg	*30 070	*30 070	*23 680	*23 680	*19 930	19 770	*17 750	14 740			*15 710	12 570	9.9
	4.5 m	kg			*26 700	26 390	*21 450	18 880	*18 440	14 300			*15 830	11 540	10.3
	3.0 m	kg			*29 170	24 850	*22 840	18 040	*19 140	13 830			15 370	11 030	10.4
	1.5 m	kg			*30 150	23 940	*23 660	17 400	18 920	13 450			15 300	10 940	10.4
	0 m	kg			*29 650	23 580	*23 640	17 040	18 680	13 220			15 790	11 260	10.1
	-1.5 m	kg	*28 620	*28 620	*27 930	23 590	*22 590	16 960	*18 250	13 190			*16 270	12 120	9.6
-3.0 m	kg	*29 680	*29 680	*24 870	23 880	*20 150	17 150					*15 600	13 820	8.8	
-4.5 m	kg	*23 420	*23 420	*19 770	*19 770	*14 870	*14 870					*13 960	*13 960	7.7	
Boom : 6.6m Arm : 2.9m Shoe : 650mm CWT : 12 100kg	9.0 m	kg											*16 400	*16 400	6.7
	7.5 m	kg					*19 940	*19 940					*15 240	*15 240	7.8
	6.0 m	kg			*22 880	*22 880	*20 430	20 240					*14 880	*14 880	8.6
	4.5 m	kg	*33 920	*33 920	*25 800	*25 800	*21 760	19 590	*16 820	14 610			*15 040	14 400	9.1
	3.0 m	kg	*39 030	*39 030	*28 770	26 400	*23 270	18 860	19 770	14 290			*15 680	13 640	9.3
	1.5 m	kg	*34 330	*34 330	*30 760	25 320	*24 380	18 240	19 440	13 990			*16 890	13 510	9.2
	0 m	kg	*41 570	39 310	*31 190	24 730	*24 610	17 850					*18 910	14 020	8.9
	-1.5 m	kg	*38 750	*38 750	*29 850	24 580	*23 410	17 760					*20 100	15 410	8.3
	-3.0 m	kg	*33 640	*33 640	*26 230	24 860							*19 670	18 420	7.4
-4.5 m	kg	*24 610	*24 610									*17 610	*17 610	6.0	
10.5 m	kg											*18 710	*18 710	6.8	
Boom : 7.1m Arm : 2.9m Shoe : 650mm CWT : 12 100kg	10.5 m	kg											*18 710	*18 710	6.8
	9.0 m	kg					*18 630	*18 630					*16 850	*16 850	8.2
	7.5 m	kg					*18 980	*18 980	*17 690	15 050			*15 990	14 420	9.2
	6.0 m	kg			*23 950	*23 950	*20 160	19 840	*17 960	14 810			*15 710	12 640	9.9
	4.5 m	kg			*27 010	26 510	*21 700	18 970	*18 650	14 380			*15 830	11 620	10.3
	3.0 m	kg			*29 490	24 990	*23 100	18 140	*19 360	13 910			15 400	11 100	10.4
	1.5 m	kg			*30 480	24 080	*23 930	17 510	18 960	13 530			15 320	11 000	10.4
	0 m	kg			*29 960	23 700	*23 890	17 140	18 700	13 290			15 810	11 320	10.1
	-1.5 m	kg	*28 620	*28 620	*28 210	23 680	*22 820	17 040	*18 440	13 250			*16 450	12 160	9.6
-3.0 m	kg	*29 990	*29 990	*25 120	23 930	*20 360	17 200					*15 770	13 850	8.8	
-4.5 m	kg	*23 670	*23 670	*19 980	*19 980	*15 030	*15 030					*14 120	*14 120	7.7	
-6.0 m	kg														

Notes: 1. Machine in "Fine Mode-F" (Power Boost) for lifting capacities.

2. The above loads are in compliance with SAE J1097 and ISO 10567 Hydraulic Excavator Lifting Capacity Standards.

3. Rated loads do not exceed 87% of hydraulic lifting capacity or 75% of tipping load.

4. Rated loads marked with an asterisk (*) are limited by hydraulic capacity rather than tipping load.

LIFTING CAPACITY EC750E

Lifting capacity at the arm end without bucket. For lifting capacity including bucket, simply subtract actual weight of the direct fit bucket or the bucket with quick coupler from the following values.

	Lifting hook related to ground level	kg	4.5 m		6.0 m		7.5 m		9.0 m		10.5 m		Max. reach		
			Along UC	Across UC	Along UC	Across UC	Along UC	Across UC	Along UC	Across UC	Along UC	Across UC	Along UC	Across UC	Max. m
Boom : 7.7m Arm : 2.9m Shoe : 650mm CWT : 12 100kg	9.0 m	kg					*18 420	*18 420					*16 850	*16 850	8.2
	7.5 m	kg					*18 760	*18 760	*17 490	14 840			*15 990	14 220	9.2
	6.0 m	kg	*30 070	*30 070	*23 680	*23 680	*19 930	19 600	*17 750	14 600			*15 710	12 440	9.9
	4.5 m	kg			*26 700	26 160	*21 450	18 710	*18 440	14 160			*15 830	11 430	10.3
	3.0 m	kg			*29 170	24 610	*22 840	17 860	*19 140	13 690			15 210	10 920	10.4
	1.5 m	kg			*30 150	23 700	*23 660	17 230	18 730	13 310			15 130	10 820	10.4
	0 m	kg			*29 650	23 340	*23 640	16 870	18 480	13 080			15 630	11 140	10.1
	-1.5 m	kg	*28 620	*28 620	*27 930	23 350	*22 590	16 780	*18 250	13 060			15 270	11 990	9.6
	-3.0 m	kg	*29 680	*29 680	*24 870	23 640	*20 150	16 980					*15 600	13 680	8.8
-4.5 m	kg	*23 420	*23 420	*19 770	*19 770	*14 870	*14 870					*13 960	*13 960	7.7	
Boom : 7.7m Arm : 3.55m Shoe : 650mm CWT : 12 100kg	10.5 m	kg					*15 240	*15 240					*14 200	*14 200	7.6
	9.0 m	kg											*13 060	*13 060	8.9
	7.5 m	kg					*17 560	*17 560	*16 330	15 180			*12 530	*12 530	9.8
	6.0 m	kg					*18 850	*18 850	*16 870	14 830			*12 380	11 410	10.5
	4.5 m	kg			*25 240	*25 240	*20 520	19 030	*17 730	14 340	15 440	11 150	*12 530	10 540	10.8
	3.0 m	kg			*28 110	25 140	*22 140	18 110	*18 610	13 810	15 160	10 890	*12 950	10 080	11.0
	1.5 m	kg			*29 770	23 970	*23 280	17 360	18 790	13 360	14 900	10 650	*13 710	9 980	11.0
	0 m	kg			*29 970	23 380	*23 650	16 890	18 450	13 040	14 750	10 500	14 330	10 220	10.7
	-1.5 m	kg	*29 290	*29 290	*28 850	23 220	*23 070	16 690	18 310	12 920			15 290	10 880	10.2
-3.0 m	kg	*32 770	*32 770	*26 430	23 380	*21 300	16 760	*16 900	13 030			*15 220	12 180	9.5	
-4.5 m	kg	*27 180	*27 180	*22 300	*22 300	*17 670	17 140					*14 280	*14 280	8.4	
-6.0 m	kg	*18 590	*18 590	*15 010	*15 010							*11 760	*11 760	6.9	
Boom : 7.7m Arm : 4.2m Shoe : 650mm CWT : 12 100kg	10.5 m	kg											*11 380	*11 380	8.5
	9.0 m	kg						*14 500	*14 500				*10 570	*10 570	9.7
	7.5 m	kg						*15 190	*15 190	*10 470	*10 470		*10 170	*10 170	10.5
	6.0 m	kg					*17 600	*17 600	*15 880	15 010	*14 770	11 490	*10 050	*10 050	11.1
	4.5 m	kg	*30 630	*30 630	*23 520	*23 520	*19 370	19 290	*16 850	14 450	*15 200	11 220	*10 160	9 590	11.5
	3.0 m	kg			*26 680	25 570	*21 170	18 280	*17 880	13 860	15 170	10 880	*10 470	9 190	11.6
	1.5 m	kg			*28 890	24 150	*22 580	17 420	*18 730	13 330	14 840	10 580	*11 030	9 080	11.6
	0 m	kg	*20 710	*20 710	*29 730	23 310	*23 310	16 810	18 350	12 940	14 600	10 350	*11 890	9 250	11.3
	-1.5 m	kg	*28 190	*28 190	*29 230	22 960	*23 160	16 490	18 120	12 720	14 500	10 260	*13 230	9 770	10.9
-3.0 m	kg	*35 020	*35 020	*27 440	22 970	*21 950	16 440	*17 740	12 710			*14 380	10 780	10.2	
-4.5 m	kg	*30 170	*30 170	*24 130	23 310	*19 290	16 680	*14 690	13 010			*13 820	12 630	9.2	
-6.0 m	kg	*22 890	*22 890	*18 480	*18 480	*13 740	*13 740					*12 320	*12 320	7.8	
Boom : 7.7m Arm : 3.55m Shoe : 750mm CWT : 12 100kg	10.5 m	kg											*11 380	*11 380	8.5
	9.0 m	kg						*14 500	*14 500				*10 570	*10 570	9.7
	7.5 m	kg						*15 190	*15 190	*10 470	*10 470		*10 170	*10 170	10.5
	6.0 m	kg					*17 600	*17 600	*15 880	15 140	*14 770	11 610	*10 050	*10 050	11.1
	4.5 m	kg	*30 630	*30 630	*23 520	*23 520	*19 370	*19 370	*16 850	14 590	*15 200	11 330	*10 160	9 690	11.5
	3.0 m	kg			*26 680	25 810	*21 170	18 450	*17 880	14 000	15 330	11 000	*10 470	9 290	11.6
	1.5 m	kg			*28 890	24 380	*22 580	17 590	*18 730	13 470	15 000	10 690	*11 030	9 180	11.6
	0 m	kg	*20 710	*20 710	*29 730	23 540	*23 310	16 980	18 550	13 070	14 760	10 460	*11 890	9 360	11.3
	-1.5 m	kg	*28 190	*28 190	*29 230	23 190	*23 160	16 660	18 310	12 850	14 660	10 370	*13 230	9 880	10.9
-3.0 m	kg	*35 020	*35 020	*27 440	23 210	*21 950	16 620	*17 740	12 850			*14 380	10 890	10.2	
-4.5 m	kg	*30 170	*30 170	*24 130	23 550	*19 290	16 850	*14 690	13 150			*13 820	12 760	9.2	
-6.0 m	kg	*22 890	*22 890	*18 480	*18 480	*13 740	*13 740					*12 320	*12 320	7.8	

- Notes: 1. Machine in "Fine Mode-F" (Power Boost) for lifting capacities.
 2. The above loads are in compliance with SAE J1097 and ISO 10567 Hydraulic Excavator Lifting Capacity Standards.
 3. Rated loads do not exceed 87% of hydraulic lifting capacity or 75% of tipping load.
 4. Rated loads marked with an asterisk (*) are limited by hydraulic capacity rather than tipping load.

Specifications

LIFTING CAPACITY EC750E

Lifting capacity at the arm end without bucket. For lifting capacity including bucket, simply subtract actual weight of the direct fit bucket or the bucket with quick coupler from the following values.

	Lifting hook related to ground level		4.5 m		6.0 m		7.5 m		9.0 m		10.5 m		Max. reach		
			Along UC	Across UC	Along UC	Across UC	Along UC	Across UC	Along UC	Across UC	Along UC	Across UC	Along UC	Across UC	Max. m
Boom : 6.6m Arm : 2.9m Shoe : 900mm CWT : 12 100kg	9.0 m	kg											*16 400	*16 400	6.7
	7.5 m	kg					*19 940	*19 940					*15 240	*15 240	7.8
	6.0 m	kg			*22 880	*22 880	*20 430	*20 430					*14 880	*14 880	8.6
	4.5 m	kg	*33 920	*33 920	*25 800	*25 800	*21 760	20 020	*16 820	14 950			*15 040	14 740	9.1
	3.0 m	kg	*39 030	*39 030	*28 770	26 990	*23 270	19 290	*20 060	14 630			*15 680	13 970	9.3
	1.5 m	kg	*34 330	*34 330	*30 760	25 910	*24 380	18 670	19 930	14 330			*16 890	13 840	9.2
	0 m	kg	*41 570	40 240	*31 190	25 320	*24 610	18 290					*18 910	14 370	8.9
	-1.5 m	kg	*38 750	*38 750	*29 850	25 170	*23 410	18 190					*20 100	15 790	8.3
	-3.0 m	kg	*33 640	*33 640	*26 230	25 450							*19 670	18 870	7.4
-4.5 m	kg	*24 610	*24 610									*17 610	*17 610	6.0	
Boom : 7.1m Arm : 2.9m Shoe : 900mm CWT : 12 100kg	10.5 m	kg											*18 710	*18 710	6.8
	9.0 m	kg					*18 630	*18 630					*16 850	*16 850	8.2
	7.5 m	kg					*18 980	*18 980	*17 690	15 390			*15 990	14 760	9.2
	6.0 m	kg			*23 950	*23 950	*20 160	*20 160	*17 960	15 150			*15 710	12 940	9.9
	4.5 m	kg			*27 010	*27 010	*21 700	19 410	*18 650	14 720			*15 830	11 910	10.3
	3.0 m	kg			*29 490	25 580	*23 100	18 570	*19 360	14 260			15 810	11 390	10.4
	1.5 m	kg			*30 480	24 670	*23 930	17 940	19 450	13 870			15 720	11 290	10.4
	0 m	kg			*29 960	24 290	*23 890	17 570	19 190	13 630			16 230	11 610	10.1
	-1.5 m	kg	*28 620	*28 620	*28 210	24 270	*22 820	17 470	*18 440	13 590			*16 450	12 480	9.6
-3.0 m	kg	*29 990	*29 990	*25 120	24 520	*20 360	17 630					*15 770	14 200	8.8	
-4.5 m	kg	*23 670	*23 670	*19 980	*19 980	*15 030	*15 030					*14 120	*14 120	7.7	
-6.0 m	kg														
Boom : 7.7m Arm : 2.9m Shoe : 900mm CWT : 12 100kg	10.5 m	kg											*18 710	*18 710	6.8
	9.0 m	kg					*18 420	*18 420					*16 850	*16 850	8.2
	7.5 m	kg					*18 760	*18 760	*17 490	15 190			*15 990	14 550	9.2
	6.0 m	kg	*30 070	*30 070	*23 680	*23 680	*19 930	*19 930	*17 750	14 950			*15 710	12 750	9.9
	4.5 m	kg			*26 700	*26 700	*21 450	19 140	*18 440	14 500			*15 830	11 720	10.3
	3.0 m	kg			*29 170	25 200	*22 840	18 300	*19 140	14 040			15 620	11 200	10.4
	1.5 m	kg			*30 150	24 290	*23 660	17 660	19 220	13 650			15 540	11 110	10.4
	0 m	kg			*29 650	23 930	*23 640	17 300	18 970	13 420			16 040	11 440	10.1
	-1.5 m	kg	*28 620	*28 620	*27 930	23 940	*22 590	17 220	*18 250	13 400			*16 270	12 310	9.6
-3.0 m	kg	*29 680	*29 680	*24 870	24 230	*20 150	17 420					*15 600	14 030	8.8	
-4.5 m	kg	*23 420	*23 420	*19 770	*19 770	*14 870	*14 870					*13 960	*13 960	7.7	
Boom : 7.7m Arm : 3.55m Shoe : 900mm CWT : 12 100kg	10.5 m	kg											*14 200	*14 200	7.6
	9.0 m	kg											*13 060	*13 060	8.9
	7.5 m	kg					*17 560	*17 560	*16 330	15 520			*12 530	*12 530	9.8
	6.0 m	kg					*18 850	*18 850	*16 870	15 170			*12 380	11 690	10.5
	4.5 m	kg			*25 240	*25 240	*20 520	19 460	*17 730	14 680	15 840	11 440	*12 530	10 810	10.8
	3.0 m	kg			*28 110	25 730	*22 140	18 540	*18 610	14 150	15 560	11 170	*12 950	10 350	11.0
	1.5 m	kg			*29 770	24 560	*23 280	17 800	*19 260	13 700	15 300	10 930	*13 710	10 240	11.0
	0 m	kg			*29 970	23 970	*23 650	17 320	18 940	13 390	15 150	10 780	14 720	10 490	10.7
	-1.5 m	kg	*29 290	*29 290	*28 850	23 810	*23 070	17 120	*18 800	13 260			*15 560	11 170	10.2
-3.0 m	kg	*32 770	*32 770	*26 430	23 970	*21 300	17 190	*16 900	13 370			*15 220	12 500	9.5	
-4.5 m	kg	*27 180	*27 180	*22 300	*22 300	*17 670	17 580					*14 280	*14 280	8.4	
-6.0 m	kg	*18 590	*18 590	*15 010	*15 010							*11 760	*11 760	6.9	
Boom : 7.7m Arm : 4.2m Shoe : 900mm CWT : 12 100kg	10.5 m	kg											*11 380	*11 380	8.5
	9.0 m	kg							*14 500	*14 500			*10 570	*10 570	9.7
	7.5 m	kg							*15 190	*15 190	*10 470	*10 470	*10 170	*10 170	10.5
	6.0 m	kg					*17 600	*17 600	*15 880	15 350	*14 770	11 780	*10 050	*10 050	11.1
	4.5 m	kg	*30 630	*30 630	*23 520	*23 520	*19 370	*19 370	*16 850	14 800	*15 200	11 500	*10 160	9 840	11.5
	3.0 m	kg			*26 680	26 160	*21 170	18 710	*17 880	14 210	15 570	11 170	*10 470	9 440	11.6
	1.5 m	kg			*28 890	24 740	*22 580	17 850	*18 730	13 680	15 240	10 860	*11 030	9 330	11.6
	0 m	kg	*20 710	*20 710	*29 730	23 900	*23 310	17 240	18 840	13 280	15 000	10 630	*11 890	9 510	11.3
	-1.5 m	kg	*28 190	*28 190	*29 230	23 550	*23 160	16 920	18 610	13 060	14 900	10 540	*13 230	10 040	10.9
-3.0 m	kg	*35 020	*35 020	*27 440	23 560	*21 950	16 880	*17 740	13 050			*14 380	11 070	10.2	
-4.5 m	kg	*30 170	*30 170	*24 130	23 900	*19 290	17 120	*14 690	13 360			*13 820	12 960	9.2	
-6.0 m	kg	*22 890	*22 890	*18 480	*18 480	*13 740	*13 740					*12 320	*12 320	7.8	

Notes: 1. Machine in "Fine Mode-F" (Power Boost) for lifting capacities.

2. The above loads are in compliance with SAE J1097 and ISO 10567 Hydraulic Excavator Lifting Capacity Standards.

3. Rated loads do not exceed 87% of hydraulic lifting capacity or 75% of tipping load.

4. Rated loads marked with an asterisk (*) are limited by hydraulic capacity rather than tipping load.

Equipment

STANDARD EQUIPMENT

Engine

Turbocharged, 4 stroke diesel engine with water cooling, direct injection and charged air cooler that meets EU Stage V requirements

Air filter with indicator

Air intake heater

Cyclone pre-cleaner

Electric engine shut-off

Fuel filter and water separator

Alternator, 80 A

Fuel filler pump, 100 l/min with automatic shut-off

Electric / Electronic control system

Contronics

Advanced mode control system

Self-diagnostic system

Machine status indication

Engine speed sensing power control

Emergency engine stop switch

Automatic idling system

Short cut switch

Safety stop/start function

Adjustable 8inch LCD color monitor

Master electrical disconnect switch

Engine restart prevention circuit

High-capacity halogen lights:

Cab-mounted 2

Frame-mounted 2

Boom-mounted 4

Batteries, 2 x 12 V / 210 Ah

Start motor, 24 V / 7 kW

Frame

Access way with handrail

Full height counterweight 12 100kg

Tool storage area

Side walk-way

Under cover (heavy duty 4.5mm)

Punched metal anti-slip plates

Undercarriage

Mechanically retractable track gauge

Hydraulic track adjusters

Greased and sealed track link

STANDARD EQUIPMENT

Hydraulic system

Hose rupture valve: boom

Overload warning device

Automatic sensing hydraulic system

Summation system

Boom priority

Arm priority

Swing priority

ECO mode fuel saving technology

Boom and arm regeneration valves

Swing anti-rebound valves

Boom and arm holding valves

Multi-stage filtering system

Cylinder cushioning

Cylinder contamination seals

Auxiliary hydraulic valve

Automatic two-speed travel motors

Hydraulic oil, ISO VG 46

Cab and interior

Silicon oil and rubber mounts with spring

Adjustable operator seat with heater and joystick control console

Control joysticks with 4 switches each

Heater & air-conditioner, automatic

Flexible antenna

AM/FM stereo with MP3, USB and bluetooth input

Hydraulic safety lock lever

Cab, all-weather sound suppressed, includes:

Cup holders

Door locks

Tinted glass

Floor mat

Horn

Large storage area

Pull-up type front window

Removable lower windshield

Seat belt

Safety glass

Sun screens, front, roof, rear

Rain shield

Windshield wiper with intermittent feature

Master key

Track Guard

Under cover (10mm)

Track shoes

Track shoes, 650 mm with double grouser

Digging equipment

Boom: ME 6.6 m

Arm: ME 2.9 m

Manual centralized lubrication

Equipment

OPTIONAL EQUIPMENT

Engine

Block heater: 120 V, 240 V
Dual stage oil bath pre-cleaner
Diesel coolant heater, 10 kW, 12kW
Water separator with heater
Auto engine shutdown

Electric

Extra work lights: Halogen/LED
Cab-mounted 3 (front 2, rear 1)
Boom-mounted 4
Frame-mounted 2
Counterweight-mounted 1
Travel alarm
Anti-theft system
Rotating warning beacon

Frame

Full height counterweight:
12 100kg removal type
Inner handrail

Undercarriage and structures

Full track guard

Hydraulic System

Hose rupture valve: arm
Straight travel pedal
Bucket conflux
Boom float function with HRV
Boom float function without HRV
Hydraulic piping:
Work tool management system (up to 20 programmable memories)
Hammer & shear, 1 and 2 pump flow
Hammer & shear: variable flow and pressure pre-setting
Additional return filter
Slope & rotator
Grapple
Quick coupler piping
Hydraulic oil, ISO VG 32, 68
Hydraulic oil, biodegradable 46
Hydraulic oil, longlife oil 32, 46, 68
Hydraulic hose for Artic

OPTIONAL EQUIPMENT

Cab and interior

One-piece fixed front windshield
Fabric seat without heater
Fabric seat with heater and air suspension
Control joysticks with semi-long
Control joysticks with 3 switch & 1 proportional
Pilot control pattern changw
Opening top hatch
Falling object guard (FOG)
Frame-mounted
Cab-mounted
Cab-mounted falling object protective structure (FOPS)
Smoker kit (ashtray and lighter)
Safety net for front window
Sunlight protection, roof (steel)
Lower wiper with intermittent control
Cleaning air gun
Rear view camera
Side view camera
Anti-vandalism kit
Specific key
FSS (Fire Suppression System)

Track Shoes

750/900mm track shoes with double grousers

Digging equipment

Boom: 7.1m, 7.7m
Arm: 2.9m, 3.55m, 4.2m

Service and maintenance

Tool kit, daily maintenance
Tool kit, full scale
Special tool for retractable frame
Automatic lubrication system

SELECTION OF VOLVO OPTIONAL EQUIPMENT

Auto lubrication system



Side view camera



Boom float



Bucket conflux



Dual stage oil bath pre-cleaner



One piece fixed windshield



Not all products are available in all markets. Under our policy of continuous improvement, we reserve the right to change specifications and design without prior notice. The illustrations do not necessarily show the standard version of the machine.





V O L V O