



YANMAR

Compact Track Loaders

Quick Reference Guide



BUILT TO

OUT-LOAD

OUT-EARN

OUT-LAST

BUILDING WITH YOU

OUR HERITAGE

At Yanmar, we are driven by the enduring vision of our founder, Magokichi Yamaoka. He believed in creating maximum prosperity with minimal resources for a sustainable future. To this day, our commitment to efficiency and reliability fuels solutions that empower long-term growth for businesses around the world.



100+ years of industrial expertise



55 years of worldwide compact equipment leadership



Expertly made, globally trusted

From mini excavators to compact track loaders, our full lineup of compact equipment is designed to tackle any challenge, all supported by your exceptional dealer service and support to ensure our customers' operations run smoothly — **now and in the future.**

2

PROUDLY ASSEMBLED IN THE USA



Yanmar compact track loaders are proudly designed, engineered, and assembled in the USA at our state-of-the-art manufacturing facility in Grand Rapids, Minnesota. It's here that raw materials become rugged, high-performance machines crafted with precision, pride, and purpose. Since 2019, when Yanmar acquired ASV Holdings, Inc. and established our North American headquarters, this facility has been the backbone of our compact equipment operations and innovation.

The Grand Rapids factory is benchmarked against our Chikugo facility in Japan, built on the same foundations of quality, precision, and manufacturing excellence. By investing in American manufacturing, we are combining global expertise with local capability, ensuring every CTL delivers the performance, durability, and reliability our customers expect from every Yanmar machine.





Key Points:

- Yanmar's reputation for reliability ensures long-lasting machines.
- ASV's dedication to operator experience enables longer, more productive workdays.

JAPANESE CRAFTSMANSHIP MEETS AMERICAN INGENUITY

A Yanmar compact track loader is the result of Yanmar's acquisition of ASV, the makers of America's original compact track loader.

ASV Proprietary Technology & Capabilities	+	Yanmar Renowned Japanese Craftsmanship	=	CTL Prioritizing Quality, Reliability, and Productivity
--	---	---	---	---

THE END RESULT? A COMPACT GAMECHANGER GROUNDED IN DECADES OF EXPERIENCE



MODEL FITMENT GUIDE

TL65RS



POWER: 67 hp / 49.96 kW ROC at 35%: 2,100 lbs / 952.5 kg

**COMPACT LOADER, WITH BIG
RETURN ON INVESTMENT**

Key Points:

- Value conscious entry-level solution
- Radial Lift perfectly suited for digging and grading; less expensive than vertical lifts.

6

TL75VS



POWER: 71.5 hp / 53.3 kW ROC at 35%: 2,555 lbs / 1315.4 kg

PERFORMANCE-READY FOR ANY JOB

Key Points:

- Value conscious versatility
- Vertical Lift for increased lift and carrying applications and loading capabilities.

7

MODEL FITMENT GUIDE

TL80vs



POWER: 71.5 hp / 53.3 kW ROC at 35%: 2,900 lbs / 1,315.4 kg

BIG PERFORMANCE WITHOUT BIG MACHINE MAINTENANCE

Key Points:

- Ideal for customers that require increased lift capacity and/or auxiliary hydraulic flow.
- Large machine capabilities with a small footprint, without dealing with DEF Treatment System.

8

TL100vs



POWER: 103.5 hp / 77.2 kW ROC at 35%: 3,780 lbs / 1,714.6 kg

CONSTRUCTION GRADE RELIABILITY AND PERFORMANCE

Key Points:

- Ideal for high-production customers requiring maximum lift capacity and height.
- Ideal for customers with demanding hydraulic-powered attachments, requiring high pressures and flow rates.

9

KEY BENEFITS

OUT-LOAD

TOP PERFORMANCE + INDUSTRY LEADING + ADVANCED TECHNOLOGY + SUPERIOR INNOVATION

- Automatic 2-speed shifting
- Electronic, dual-direction self-leveling
- Independent, torsion-suspended undercarriage
- Clear side glass for unmatched visibility
- No stacked coolers providing better heat rejection

OUT-EARN

PRODUCTIVITY + UPTIME + TOTAL COST OF OWNERSHIP + RETURN ON INVESTMENT

- 7 in / 178 mm color touch screen display
- More track on the ground yields more traction and stability
- Auto idle with hand throttle and foot throttle
- EH-adjustable joystick controls (Pattern & Sensitivity)
- Hydraulic quick-attach
- Automatic ride control
- Return-to-Position function
- SmartAssist telematics

10

OUT-LAST

DURABILITY + RELIABILITY + SERVICEABILITY + ENDURANCE

- 2 year / 2,000-hour base warranty
- 1 year / 1,000-hour track warranty
- Four toolless swing-out doors for easy serviceability
- Cab tilts back for additional access with the removal of two easily accessible bolts
- Finely tuned system around a Yanmar engine with proven reliability



11

STANDARDS THAT STAND OUT:

- No stacked coolers for better heat rejection and easier cleaning
- Industry leading ground clearance
- Independent torsion axles standard

OPTIONS

- 0.5 in / 12.7 mm Polycarbonate Door
- Rear View Camera
- Air-Ride Suspended Seat
- LED Side Lights
- FOPS Level 2 Kit
- Over-the-Glass Protective Screens
- Foot Throttle

AUX HYDRAULICS

- Aux hydraulics standard
- High-flow aux hydraulics optional
- Competitive aux hydraulic power

DRIVE TRAIN

- Automatic 2-speed shifting
- Direct-drive track motor (No planetary gearbox to maintain)
- Creep Mode standard

SAFETY

- LED working lights
- Easy ingress and egress of the cab with a low, wide-foot plate
- Multiple emergency exits, including an industry-first roof hatch

MAINTENANCE

- Easy access to engine with multiple swing out doors
- 500-hour oil change interval
- Removable belly pans for improved access & clean-out
- Quick, rear-tipping cab for easy component access

ENGINE

- Trusted Yanmar engine
- 4-Cylinder, intercooled turbo
- Tier 4 Final compliant

TRACK

- Steel embedded, multi-purpose bar tread track
- Track design reduces vibration and noise



COMPACT TRACK LOADER SPECIFICATIONS

TL65RS-1C TL75VS-1C TL80VS-1C TL100VS

LIFT SYSTEM

Lift Type	Radial	Vertical	Vertical	Vertical
Rated Operating Capacity at 35% (lbs / kg)	2,100 / 952.5	2,555 / 1,158.9	2,900 / 1,315.4	3,780 / 1,714.6
Rated Operating Capacity at 50% (lbs / kg)	3,000 / 1,360.8	3,650 / 1,655.6	4,143 / 1,879.2	5,400 / 2,449.4
Tipping Load (lbs / kg)	6,000 / 2,721.6	7,300 / 3,311.2	8,286 / 3,758.5	10,800 / 4,898.8
Bucket Breakout Force (lbs / kg)	4,800 / 2,177.2	5,422 / 2,459.4	5,972 / 2,708.9	8,500 / 3,855.5
Max Bucket Pin Height (in / mm)	120 / 3,048.0	126.5 / 3,213.1	126.5 / 3,213.1	132 / 3,352.8

ENGINE

Yanmar Engine Code	4TN86CHT	4TN86CHT	4TN86CHT	4TNV94FHT
Horsepower (hp / kW)	67 / 49.96	71.5 / 53.3	71.5 / 53.3	103.5 / 77.2
Emissions	Meets all U.S EPA Tier 4 Final Standards			
Block Heater	120 Volt, Standard			
Throttle	Auto Idling, Hand Throttle, Optional Foot Throttle			
Creep Mode	Standard			

TRACK & UNDERCARRIAGE

Max Travel Speed (mph / kph)	7.5 / 12	7.5 / 12	8 / 12.8	8 / 12.8
Track Width (in / mm) (S / O)	12.6 / 15.7 320 / 399	12.6 / 15.7 320 / 399	15.7 / 399	17.7 / 450
Length of Track on Ground (in / mm)	60 / 1,524.0	60 / 1,524.0	60 / 1,524.0	67 / 1,701.8
Ground Pressure (psi / kPa) (S / O)	5.67 / 4.55 39 / 31.37	6.09 / 4.89 42 / 33.7	5.1 / 35.16	4.4 / 30.33
Ground Clearance (in / mm)	12.75 / 323.9	12.75 / 323.9	12.75 / 323.9	15 / 381.0

AUXILIARY HYDRAULIC SYSTEM

Auxiliary Hydraulic Pressure (psi / kPa)	3,480 / 23,993.8	3,480 / 23,993.8	3,480 / 23,993.8	3,989 / 27,503.2
Auxiliary Hydraulic Flow (S) (GPM / LPM)	21.4 / 81.0	21.4 / 81.0	24.7 / 93.5	23 / 87.1
Auxiliary Hydraulic High Flow (O) (GPM / LPM)	26.7 / 101.1	26.7 / 101.1	34.3 / 129.8	41 / 155.2

(S): Standard (O): Optional

TL65RS-1C TL75VS-1C TL80VS-1C TL100VS

MACHINE CAPACITIES

Fuel Tank (gal / l)	21.5 / 81.4	21.5 / 81.4	21.5 / 81.4	34 / 128.7
Hydraulic Tank (gal / l)	4.2 / 15.9	4.2 / 15.9	4.2 / 15.9	13.1 / 49.6
Engine Oil including Filter (qts / l)	8 / 7.6	8 / 7.6	8 / 7.6	10 / 9.5
Engine Coolant (gal / l)	3.25 / 12.3	3.25 / 12.3	3.25 / 12.3	2.87 / 10.9
DEF Tank (gal / l)	N/A	N/A	N/A	5 / 18.9

MACHINE CAPACITIES

Operating Weight, Open Base (lbs / kg)	8,575 / 3,890	9,205 / 4,175	9,610 / 4,359	10,555 / 4,788
Operating Weight, AWC Cab, All Options, HF (lbs / kg)	9,065 / 4,112	9,695 / 4,398	10,100 / 4,581	11,045 / 5,010
Shipping Weight, Open Base (lbs / kg)	7,842 / 3,557	8,472 / 3,843	8,876 / 4,026	9,602 / 4,355
Shipping Weight, AWC Cab, All Options, HF (lbs / kg)	8,332 / 3,779	8,692 / 3,943	9,366 / 4,248	10,092 / 4,578

OPERATOR STATION

Instrument Cluster	7" Color Touchscreen Display
Operator's Platform	Mechanical Suspension Seat, 2" Lap Seat Belt, Single, Side Pivoting Lap Bar
Operator's Controls	Electric Hydraulic (ISO or H Pattern Adjustable), 3-way Adjustable Arm Rests
Cab Lighting	2 Front LED Lights, 2 Rear LED Lights

ELECTRICAL SYSTEM

System Voltage	12 Volt
Alternator	80 Amp
Battery	800 CCA

CTL MACHINE DIMENSIONS

	TL65RS-1C	TL75VS-1C	TL80VS-1C	TL100VS
DIMENSIONS (BASED ON FIGURE 1)				
(A) Dump Angle (°)	34	57	57	42
(B) Roll Back Angle (°)	20	20	20	28
(C) Reach (in / mm)	17.5 / 444.5	32 / 812.8	32 / 812.8	43 / 1092.2
(D) Departure Angle (°)	36	36	33.8	30
(E) Machine Length with Dirt Bucket (in / mm)	142 / 3,606.8	142 / 3,606.8	142.3 / 3,614.4	154 / 3,911.6
(F) Max Bucket Pin Height (in / mm)	120 / 3,048.0	126.5 / 3,213.1	126.5 / 3 .213.1	132 / 3,352.8
(G) Height of Machine (in / mm)	82 / 2,082.8	81.75 / 2,076.5	82 / 2,082.8	84.5 / 2,146.3
(H) Ground Clearance (in / mm)	12.75 / 323.9	12.75 / 323.9	12.75 / 323.9	15 / 381.0
(I) Outside Track Width, Standard Tracks (in / mm)	66 / 1,676.4	66 / 1,676.4	70 / 1,778.0	78 / 1,981.2

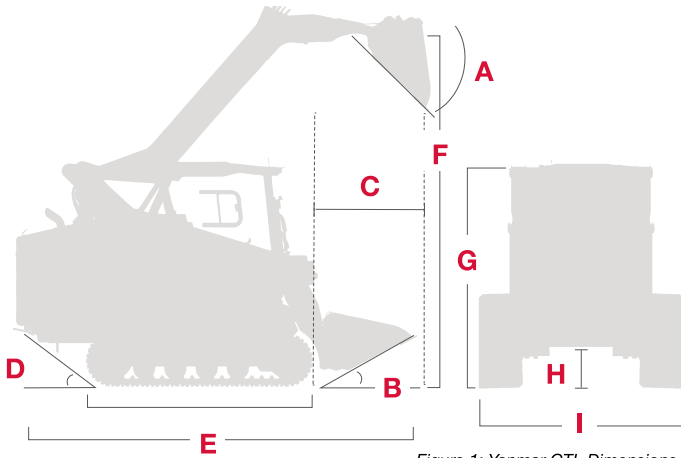


Figure 1: Yanmar CTL Dimensions

DEALER RESOURCES



YANMAR ACADEMY: POWERTRAIN

Log into our training and sales portal to access the latest materials from the Yanmar Academy.

yanmar.sabacloud.com/Saba

DEALER PORTAL

Your one-stop destination for everything you need stay informed and build your business with Yanmar.

apps.YanmarCE.com



You'll have access to the following key areas:



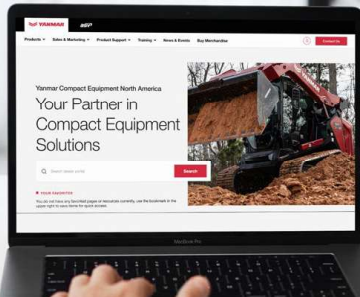
PRICING & PROGRAMS



NEWS & HIGHLIGHTS



CTL MARKETING MATERIAL



PUBLIC RESOURCES

VIDEOS

Stay up to date with our latest walkarounds, new product release videos, and how-to videos through our YouTube channel.

www.youtube.com/@YanmarUSA



LITERATURE & BROCHURES

Easily download detailed brochures on our full range of compact equipment via our download library.

www.YanmarCE.com/download-library/

YANMAR WEBSITE

Our dedicated North American website contains all the information you might need to support your business.

YanmarCE.com





VERSION-2

Compact Track Loader Quick Reference Guide

© 2025 Yanmar Compact Equipment North America